

RANGE
MRT
VISION+



Discover in augmented reality your
new MRT Vision + now.

 **MANITOU**
HANDLING YOUR WORLD



Discover the new cabin

Simply scan the QR code with your smartphone !

Standard rear camera

Operator comfort

You will never leave the cabin of your MRT VISION + !

- **Quick to get started**
Large, intuitive 12.1" touchscreen, also usable via an additional navigation button. Also works with gloves !
- **Dynamic load charts on the screen**
To monitor the position of the load in real time. On-board diagnostic system.
- **Exceptional visibility**
Exceptional visibility thanks to the design of the new panoramic cabin.
- **Pressurized cabin**
Guarantees a healthy working environment and additional sound insulation.
- **Choose your environment**
Position the new interchangeable "DSB" buttons in the position you want on the 2 integrated armrests.
- **Rear view mirrors (R/G) electric and defrosting**
Great comfort that allows you to benefit from an optimal visibility.

New remote control

The radio control with integrated screen allows precise control of your load. You can also move your machine from the basket and from a distance! (optional)

Securing the operators and their environment

Manitou is committed to designing machines that provide optimum safety for users.

- **Access from all 4 sides of the machine !**
Easier access to the chassis floor, whatever the position of the turret, thanks to the new system of integrated access on the 4 sides of the machine.
- **An intelligent and secure machine**
Dual "capacitive" joystick with integrated detection sensors to secure movements and limit risks.
- **Determine your work area**
To secure your repetitive handling on congested sites and gain in safety.
- **State of charge monitor (CEC)**
Continuously analyzes the position of the load in the space and the working configuration of the machine. The system restricts the working area according to the attachment and the load handled.

360° night lighting

Available as an option, the 360° lighting includes 5 headlights at the ends of the machine for total visibility.

Simplified user's guide Videos

Reduce Risks helps you to use your machines safely



- **Locking of hydraulic functions**
Locking of the carriage tilt to secure your delicate handling and of all hydraulic functions, including stabilizers.
- **Automatic parking brake**
The standard automatic parking brake makes maneuvering safe on any terrain.

Manitou is committed to reducing your total cost of ownership (TCO)

Throughout the project, we integrate your total cost of ownership in order to develop high-performance, robust and cost-optimized machines.

ECO-STOP

The optional ECOSTOP system limits the use of the engine and therefore wear and fuel consumption. The hour meter is based on actual working hours.

ECO-MODE

This standard feature significantly reduces fuel consumption on the move: the engine speed automatically adapts to the needs of the transmission.

- **Reduced consumption and noise on site**
Reduced cabin noise and fuel consumption with the new Stage 5 engine. Significant impact on the environment.
- **Easy maintenance**
Simplified access to maintenance and hydraulic components for reduced service time.
- **Optimized resale value**
The MRT range brings you a high resale value thanks to its performance, quality and durability of its components.
- **Reduced downtime**
Externally accessible boom hydraulic hoses for easy maintenance and reduced downtime
- **LED working lights and road lights**
All the lighting is LED to increase brightness and reduce power consumption.



Protect your equipment and control access !
As an option, you can manage driving authorizations and control operator access to your machines to ensure their safety and that of the workplace.

Connected solutions

Follow your machine's position 24 hours a day in real time and optimize its operational follow-up.

- **View in real time**
Manage your fleet remotely and benefit from a multitude of information on your machines accessible on PC, tablet or smartphone.
- **Anticipate maintenance**
Save time: share your alerts directly with the technician to anticipate parts and reduce response time.
- **Analyze performance**
Visualize the performance of your machines in a graphical format that is easy to follow and interpret.

Working height :

from **22** to **35** m

Maximum capacity up to :

7000 kg

Working offset up to :

28 m

3 steering modes



Automatic wheels alignment

HYDRAULIC SPEED

You can set the maximum speed of all hydraulic movements on the machine.

New mini-joystick for easy and precise control of stabilizer movements



The Easy Step cab and the large handles make getting in and out of the cab even easier



EXCEPTIONAL VISIBILITY

The new MRT cab offers the option of an ultra panoramic cab for full visibility (no roof window grill) that meets ROPS/FOPS Level 2 safety standards.



MRT 3570 ES

Thanks to its chassis and suspension, the MRT provides a high level of driving comfort and allows both lateral and longitudinal slope correction in the field.

Boom accuracy

The pentagonal section makes the telescopic boom more rigid and ensures perfect guidance of the elements between them. Lateral oscillations are considerably reduced.

Maximum productivity

thanks to the new hydraulic system and the Load Sensing pump.

Modular stabilization surface

The telescopic scissor design of the outriggers allows them to be only partially deployed in case of obstacles or in a narrow construction site.

Why choose the Bi-energy option ?

The «Bi-energy» system is a removable block that allows the machine to be used in zero emission mode for hydraulic movements when the machine is stabilized. The machine works without exhaust gases and without noise pollution for a reduced consumption !

High strength frame structure

Chassis providing all the resistance thanks to their structures that integrate all the electrical and hydraulic lines to be totally protected.

Did you know that ?

The MRT VISION+ are equipped with the new heating system using the engine's heat, reducing the noise in the cabin.

Easy stabilization
Automatic movement of the stabilizers and automatic leveling.



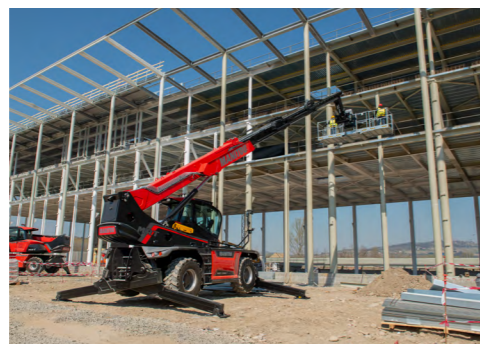
Integration with the design

The folded skids automatically fit into the machine's frame. No loss of ground clearance. The cylinders are perfectly protected.

Authorized tilt **7°** lateral (8° on 35 m)

Exceptional ground clearance

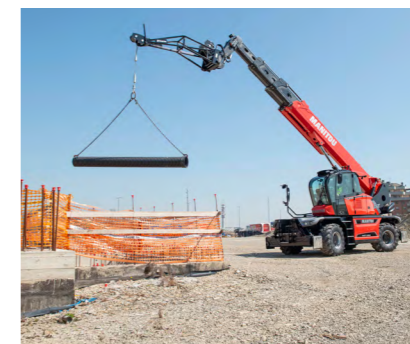
Optimum stability on stabilisers with a ground clearance of 43 cm under wheels.



New transmission with «Speedshift» gearbox

Automatic or manual shifting on the fly and while driving on MRTs from 22 to 30m.

The continuous CVT transmission is part of the MRT 3570's equipment, providing more comfort and flexibility for your road travel.





3 in 1

One machine for 3 modes: telescopic / basket / suspended load capability type

Manitou telescopic handlers are true tool carriers on which you can easily attach the Manitou-approved accessory specifically adapted to your application.

	MRT 2260	MRT 2660	MRT 3060	MRT 2570	MRT 3570	MRT 3570 ES
Max. capacity	6000 kg	6000 kg	6000 kg	7000 kg	7000 kg	7000 kg
Max. lifting height.	21,8 m	25,9 m	29,9 m	24,8 m	34,7 m	34,7 m
Max. reach	18,2 m	21,7 m	25,9 m	20,5 m	28 m	28 m
Engine norm	Yanmar EU Stage V / US EPA Tier 4	Yanmar EU Stage V / US EPA Tier 4	Yanmar EU Stage V / US EPA Tier 4	Yanmar EU Stage V / US EPA Tier 4	Yanmar EU Stage V / US EPA Tier 4	Yanmar EU Stage V / US EPA Tier 4
Engine power I.C.	156 hp / 115 kW	156 hp / 115 kW	173 hp / 127 kW	173 hp / 127 kW	211 hp / 155 kW	211 hp / 155 kW
Overall width	2,5 m	2,5 m	2,5 m	2,5 m	2,5 m	2,5 m
Overall height	3,1 m	3,1 m	3,1 m	3,1 m	3,26 m	3,26 m
Length to heel of forks	6,97 m	8,08 m	7,94 m	7,67 m	8,86 m	8,86 m
Outer turning radius	4,22 m	4,22 m	4,37 m	4,37 m	4,91 m	4,91 m
Ground Clearance	0,36 m	0,36 m	0,36 m	0,36 m	0,36 m	0,36 m
Tilt adjustment +/-	7	7	7	7	8	8
Longitudinal tilt correction +/-	-	-	-	-	-	3
Weight	18000 kg	18000 kg	21800 kg	21300 kg	23800 kg	24000 kg

Floating fork carriage

A unique, sleek design for unparalleled visibility and 30% less weight. Available in 6T and 7T.



Hydraulic winch

Hydraulic winch 6T (22, 26 and 30) and 7,2T (25 and 35). Improved speed compared to the previous generation.



Basket

Open/close in less than 50s. (up to 1000 kg, three people). Easy access with three entry points..



Jib

Robust and simple solution for handling suspended loads. Jib crane equipped with 2 hooks to better adapt to your needs.



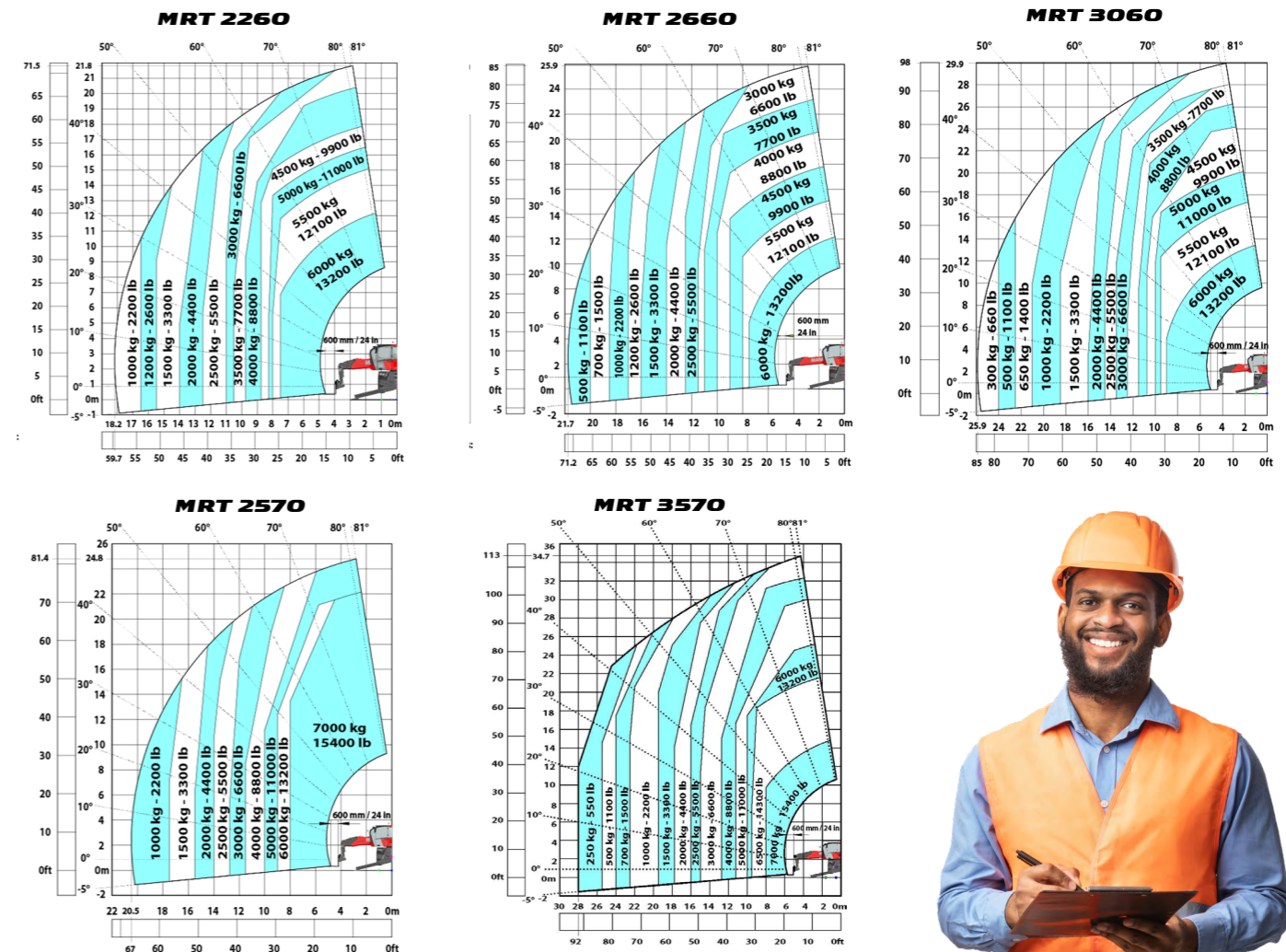
Jib with winch

Gain more outreach while transforming your MRT into a mobile crane with this jib-extension with hydraulic winch. Direct hook mounting for more speed.



Aerial JIB 2

Solution for lifting people allowing to work in positive (+9.3m) as well as in negative (-6,4m). 360° rotation of the arm. Capacity 200 kg including 2 persons.



E-RECO
RECOGNITION CONTROL
The MRT range is equipped as standard with the E-RECO accessory recognition system. It detects and analyzes the accessory to propose the corresponding work envelope and thus help you optimize the machine's working parameters.

Do you know ECO-LIFT ?
(standard)
Simply press a button and the engine speed automatically adjusts to send the optimum oil flow and allow the hydraulic winch to select the best speed.

A solution tailored to your needs
Discover a wide range of options. To access all options, ask your Manitou contact.

Boom suspension
The system absorbs involuntary boom movements while you are driving, improving driving comfort.

Cameras
Boom head and side cameras are available to secure your maneuvers on construction sites.

Heated seat and carpet
to work in difficult situations.

Electric reclining seat up to 18° for more comfort and visibility on high loads.

Standard on MRT 35 m



As a fleet manager, we measure precisely the TCO and profitability of our equipment. We look for machines that are versatile and safe, and that meet the space constraints of the construction sector.

Your dealer



Scan and discover
more information
on [manitou.com](https://www.manitou.com)



This publication describes the versions and configuration possibilities of Manitou products which may differ in equipment. The equipment shown in this brochure may be standard, optional, or not available depending on the version. Manitou reserves the right to change the specifications described and shown at any time without notice. The specifications shown are not binding on the manufacturer. For more details, contact your Manitou dealer. Non contractual document. All logos and corporate identity are the property of Manitou and may not be used without permission. All rights reserved. The photos and diagrams contained in this brochure are provided for reference purposes only. Manitou BF SA - Public limited company with a Board of Directors - Share capital: 39 547 824 euros - 857 802 508 RCS Nantes

©Manitou ©Adobe stock