

**SKID STEER LOADERS  
COMPACT TRACK LOADERS**

**SR130 | SR160 | SR175 | SV185 | SR210 | SR240 | SR270  
SV280 | SV340 | TR270 | TR310 | TR340 | TV380**

**CASE**

**CONSTRUCTION**



**POWER YOU  
CAN TRUST**

[www.casece.com](http://www.casece.com)

**EXPERTS FOR THE REAL WORLD  
SINCE 1842**



# ACROSS HISTORY



## EXPERTS FOR THE REAL WORLD SINCE 1842

**1842** CASE is founded.

**1969** CASE begins skid steer loader production with the first model the 1530 Uni-Loader.

**1995** CASE initiates co-branding and supply agreements with several key suppliers for power and application attachments as well as quick couplers.

**1998** The exclusive Ride control is introduced on loader backhoes and skid steer loaders: another CASE first.

**2011** CASE launches brand new series of skid steer and compact track loaders.

**2015** New Tier 4 Final / EU Stage IIIB models further enrich CASE skid steer and compact track loaders offering.

**2017** CASE introduces upgraded 90 hp models with increased performance and SCR-only Tier 4 Final / Stage IV technology. Wichita plant achieves the recognition of Silver Level in WCM (World Class Manufacturing), a methodology applied to improve quality by increasing the plants efficiency.



# PRODUCTIVITY AND RELIABILITY



## RADIAL AND VERTICAL BOOM

Extended line up to meet any customer need

To deliver Case specific performance and productivity to an ever wider range of customers, Case Construction Equipment has expanded its skid steer and compact track loader line-up. The revised range includes six radial lift skid steers (SR models), three radial lift compact track loaders (TR models) three vertical lift skid steers (SV models) and one vertical lift compact track loader (TV model).

# CLEAN POWER, MAXIMISED PRODUCTIVITY



## Compact HI-eSCR



## LOW EMISSIONS

### Low-to-no-maintenance T4 technology

The electronic engine control enhances precision and responsiveness to operator commands.

All models with ROC higher than 1700 lb (SR175 and bigger) are equipped with High Pressure Common Rail (HPCR) technology, which regulates fuel pressure and injection timing ensuring extremely high injection precision in all engine operating conditions. This results in more torque output and allows to get more useful power from every drop of fuel.

- Cooled Exhaust Gas Recirculation (CEGR) process is now controlled electronically to achieve greater performance and fuel efficiency, as well as even greater reliability - for example, to help protect the engine from overheating.
- SCR- technology on all 90 hp models; a liquid-reductant agent (ammonia) is injected into the exhaust stream to reduce the level of NOx. For the customer, SCR means high performance, ease of maintenance and low operating costs.
- Diesel Oxidation Catalyst (DOC) utilizes a chemical process in order to break down pollutants from diesel engines in the exhaust stream, turning them into less harmful components. DOC is a maintenance-free component.
- Diesel Particulate Filter (DPF) physically traps particulate matter from the engine exhaust. Electronic controls will trigger an automatic regeneration of the DPF system. Additionally, the system can notify the machine operator to manually regenerate the DPF system occasionally when the soot load in the DPF exceeds the range defined for automatic regeneration.

Model	Power HP (kW)	Engine	Tier 4 Technology
SR130	49 (36)	ISM N844L-F IDI	Tier 3
		2.2 L	-
SR160	60 (45)	ISM N844LT-F IDI	Stage 3B / Tier 4F
		2.2 L	CEGR + DPF + DOC
SR175	67 (50)	ISM N844LTA-DI-F	Stage 3B / Tier 4F
		2.2 L (HPCR)	CEGR + DOC
SV185	60 (45)	ISM N844LTA-DI-F	Stage 3B / Tier 4F
		2.2 L (HPCR)	CEGR + DOC
SR210	74 (55)	FPT F5H HPCR	Stage 3B / Tier 4F
		3.4 L	CEGR + DOC
SR240	74 (55)	FPT F5H HPCR	Stage 3B / Tier 4F
		3.4 L	CEGR + DOC
SR270	90 (67)	FPT F5H HPCR	Stage IV / Tier 4F
		3.4 L	CEGR + SCR
SV280	74 (55)	FPT F5H HPCR	Stage 3B / Tier 4F
		3.4 L	CEGR + DOC
SV340	90 (67)	FPT F5H HPCR	Stage IV / Tier 4F
		3.4 L	CEGR + SCR
TR270	74 (55)	FPT F5H HPCR	Stage 3B / Tier 4F
		3.4 L	CEGR + DOC
TR310	74 (55)	FPT F5H HPCR	Stage 3B / Tier 4F
		3.4 L	CEGR + DOC
TR340	90 (67)	FPT F5H HPCR	Stage 3IV / Tier 4F
		3.4 L	CEGR + SCR
TV380	90 (67)	FPT F5H HPCR	Stage 3IV / Tier 4F
		3.4 L	CEGR + SCR



# POWER OUTSIDE, COMFORT INSIDE



Great stability thanks to the long wheelbase



Chassis supports pushing power!



Additional Counterweight to increase ROC



## OUTSTANDING STABILITY

with Case power stance chassis

Our power stance chassis rides on a 21 percent longer wheelbase, delivering greater stability and comfort and allowing increased lifting capabilities, regardless of jobsite conditions.



## TOP RANKING BREAKOUT FORCE

Case cylinder and chassis design provides maximised pushing power

The cylinder geometry optimises the skid steer and compact track loader's push and pull power, while the bucket support bearing directly on the chassis of the machine further adds to its pushing power.



## HIGH ROC

with bolt-on counterweights

Simply bolt on additional counterweights to the rear sides of the machine. Increase ROC by adding counterweights to move more material, more quickly. Decrease ROC (operating without counterweights to keep fuel costs down and decrease ground disturbance.



# THE MOST COMFORTABLE CAB EVER



## HIGH VISIBILITY

Wider glazed surface for safer operations

The large glazed surface with ultra-narrow wire side screens, the lowered threshold and thinner front pillars provide the best visibility in the market (ROPS / FOPS cab).



## EASY ACCESS

Safety first

Low threshold, together with convenient grab handles make accessing the cab easy and safe.



# POWER OUTSIDE, COMFORT INSIDE



## COMFORTABLE AND SAFE CAB

### Leading operator comfort

The wide door, repositioned grab handles and a lower threshold provide easy access to the cab. All models have suspension seats and optional air suspension heated seats for the ultimate in comfort. If specified with full cab glazing and door, the cab is completely sealed to reduce the amount of noise and dust.

### 25% wider cab

It's not just the range that has expanded: all models benefit from a cab with up to 25% more internal width, providing greatly improved operator comfort. Our cab - the widest in the industry - provides plenty of room for comfortable operation, with greater headroom and legroom, more space between the control levers and easy access to the seat.



## EFFECTIVE RIDE CONTROL

### Optimised shock absorption

Comfort goes with productivity with CASE patented Ride Control. This optional feature is a shock absorber which reduces loader arm bouncing at elevated speed for greater material retention and increased operator comfort. More material moved, more quickly.





# CONTROL EVERYTHING WITH TWO FINGERS



## VERSATILE CONTROLS

### Tailor-made performance

The upgraded Case skids now offer EZ-EH (electro-hydraulic) controls and software. Operators can quickly change between nine presets for speed and control customization.

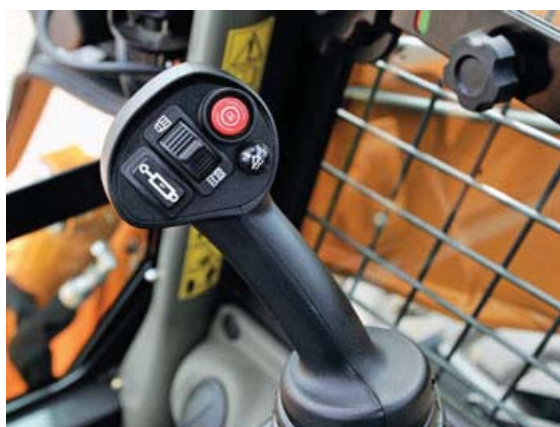
## FREE TO CHOOSE THE MOST SUITABLE CONTROL

### Mechanical or Electro Hydraulic controls

All controls are within easy reach and you can choose among mechanical hand levers or mechanical foot pedals, or electro-hydraulic controls.

### Proportional auxiliary hydraulics

Standard Proportional control of Auxiliary Hydraulics with detent for smooth and precise attachment control.







## HIGH VERSATILITY

### Hydraulics simplified. Versatility maximised

Connect Under Pressure (CUP) system to plug hydraulic hoses with no wrenches. Three different Auxiliary Hydraulics Packages offered:

#### (1) Standard Flow Package

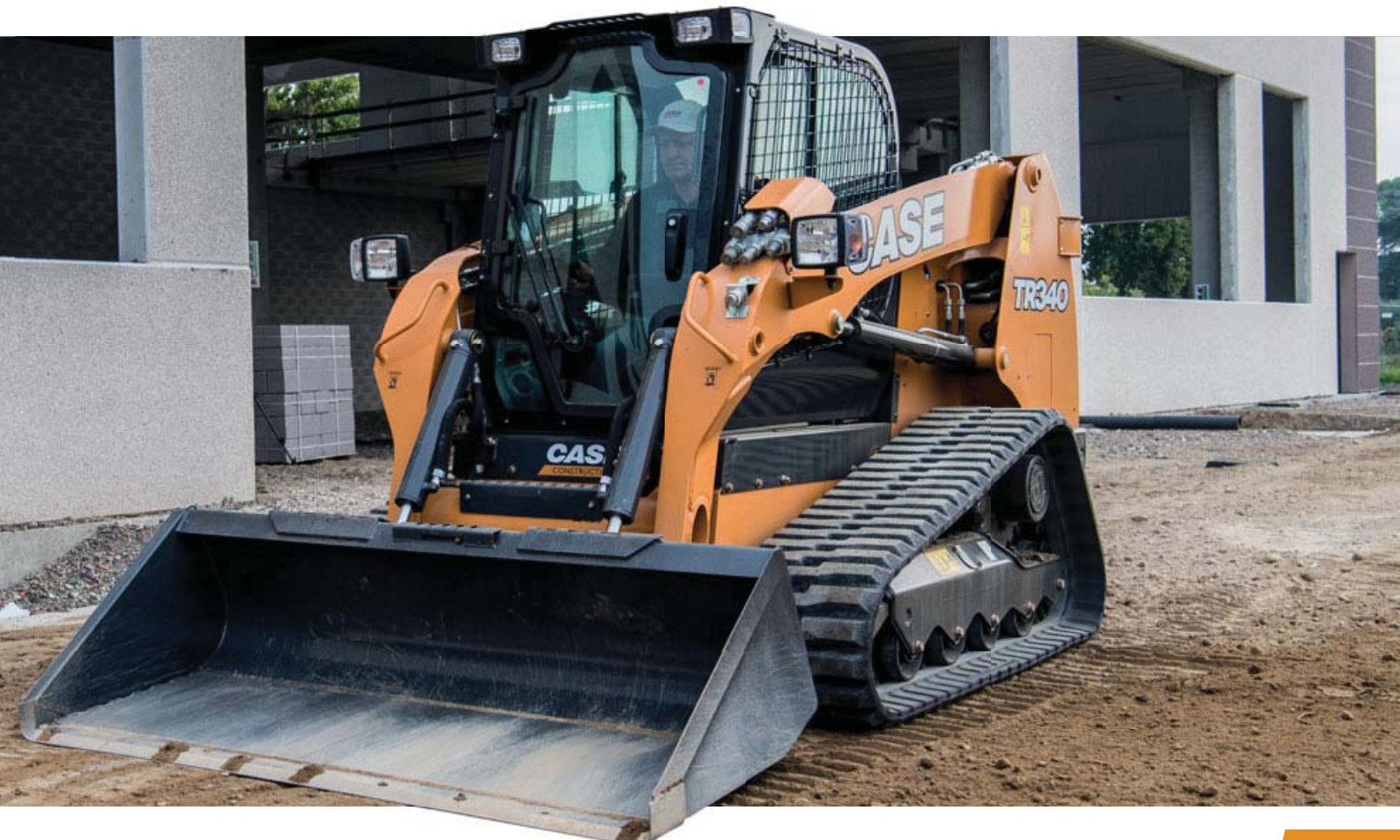
- The standard system operates the majority of available hydraulic attachments
- The proportional control provides a precise control of the attachment

#### (2) High Flow Package

- Up to 55% more flow with the high-flow auxiliary hydraulics option (package level 4 and 5)
- High flow is required for attachments such as cold planers, rock wheels or large hammers
- Packages level 4 and 5 include a 14-pin front electric system to handle multiple movements of the attachment directly from the joysticks

#### (3) Enhanced High Flow Package

- 30% more pressure on the auxiliary hydraulic system with the Enhanced High Flow option (package level 7) for extreme applications, such as large cold planers and mulchers
- The package level 7 option includes also a second auxiliary hydraulic circuit for applications requiring multiple movements simultaneously
- This option is available on the 90 hp models: SR270; SV340; TR340 and TV380



# MAIN REASONS TO CHOOSE THE SSL-CTL RANGE



## RADIAL AND VERTICAL BOOM

- Radial for digging and pushing
- Vertical for loading and carrying



## LOW EMISSIONS

- Low-to-no maintenance Stage IIB / Stage IV Tier 4 technology



## HIGH ROC

- Additional counterweights



## SIMPLE AND ROBUST UNDERCARRIAGE

- Robust fixed undercarriage
- Few moving parts
- Self-lubricated rollers



## HIGH VERSATILITY

- Wide range of attachments
- Different auxiliary hydraulic solutions to feed them.



## FAST ATTACHMENT CHANGE OVER

- Mechanic or hydraulic quick coupler
- Connect Under Pressure (CUP) system to plug hydraulic hoses with no wrenches







## COMFORTABLE AND SAFE CAB

- Wide cab, flat floor, convenient lap bar, optimized A/C air flow
- ROPS, FOPS certified
- Suspension and heated seats



## HIGH VISIBILITY

- Unique side lightening
- Large side windows for an excellent visibility
- Better sight lines to the tires, bucket edge, curb lines and even to the rear when backing up.



## EASY ACCESS

- Wider cab entrance
- Lower threshold
- Longer and ergonomic handles



## VERSATILE CONTROLS

- Mechanical or EH customizable controls
- Speed and sensitivity can easily be adjusted
- ISO-H switchable controls
- Ride Control for a greater operator comfort



## OUTSTANDING STABILITY

- Longer wheelbase
- Optimized weight distribution



## TOP RANKING BREAKOUT FORCE

- Aggressive bucket cylinder mounting for superior digging efficiency





# SKID STEER LOADERS COMPACT TRACK LOADERS





# POWER OUTSIDE, COMFORT INSIDE



## SIMPLE AND ROBUST UNDERCARRIAGE

to ensure long-lasting operativity

The new Case compact track loaders feature a robust undercarriage, engineered to hold fast on steep slopes and take command of muddy or sandy terrain. The undercarriage has a rigid-track frame with fewer moving parts for greater durability and easier maintenance than suspension-track systems.

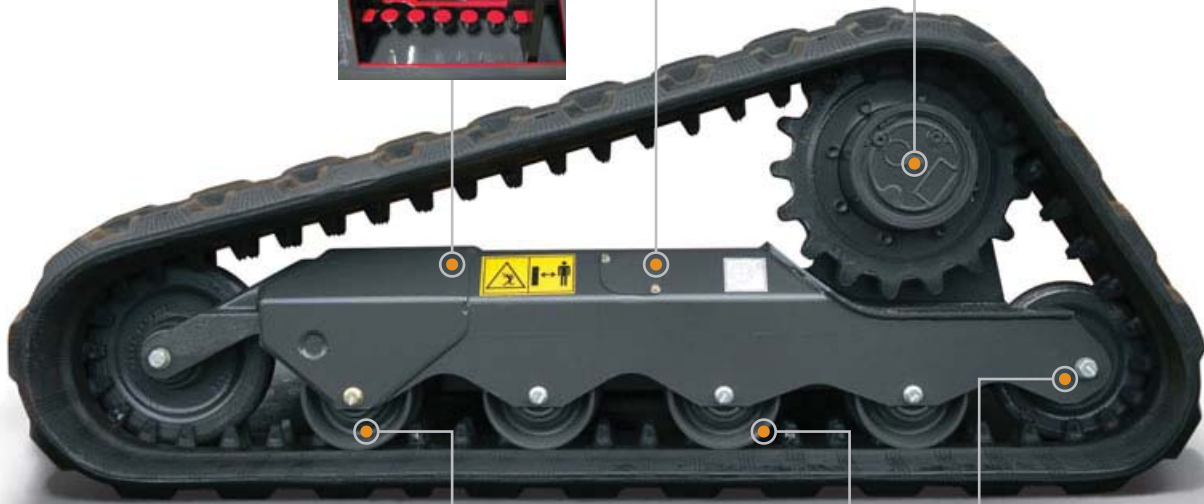
### Simple hydraulic track adjustment

Track tension is simply adjusted by adding or removing grease to an hydraulic cylinder. Track tension is important to undercarriage life and track life.



### Heavy-duty drive motor/final drive

Increases component life by using an oversized bearing in line with the drive sprocket and elevating the drive assembly, keeping it out of material.



### Triple flange rollers

Helps prevent de-tracking on inclines by using dozer-style rollers with a larger inner-diameter flange positioned between the track lugs.



### Lifetime sealed and oil lubricated rollers and idlers

Duo-cone face seals utilize proven dozer oil-lubrication technology that provides greater reliability and lower maintenance costs. The seals reduce the possibility of material and moisture getting into the rollers and idlers.



# MAINTENANCE MADE EASY AND RATIONAL



## SAFE AND EASY MAINTENANCE

### Convenient cab tilting

With just two retaining bolts, the cab is easy to tilt, providing access to hydraulic and transmission components when necessary.

A safety locking system that prevents the cab from dropping is automatically activated.

### Best-in-class serviceability

Easy access, daily service points grouped together and remote mounted filters mean it's easy to keep Case skid steer and compact track loaders working to their maximum efficiency.



Maintenance kept easy even with the most advanced T4 engine technology



### Smart battery and drain hoses access

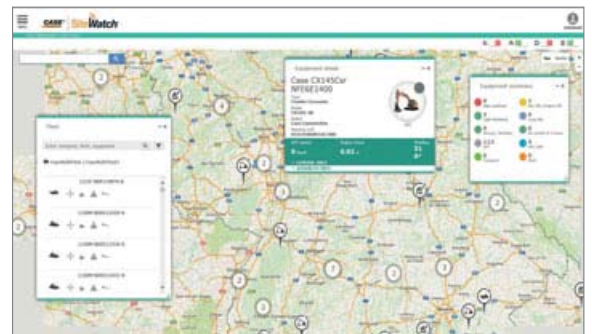
Battery and environmental drain hoses are easily accessible from the side of the machine, by removing a tap located behind the rear wheel, allowing quick service and fast maintenance activities.





## THE SCIENCE BIT

The Case SiteWatch telematics system uses a high-tech control unit mounted on each machine to collate information from that machine and from GPS satellites. This data is then sent wirelessly through the mobile communication networks to the Case Telematics Web Portal.



## SiteWatch: centralised fleet control benefits at your fingertips

- 📶 Measure your true asset availability and optimise it
- 📶 Challenge your Total Cost of Ownership!
- 📶 More Safety, Lower Insurance Premium

## TYRE OPTIONS

FUNCTIONAL VARIANTE	DESCRIPTION	SR130	SR160	SR175	SV185	SR210	SR240	SR270	SV280	SV340
8501207	10X16.5 Heavy Duty 590TW	x	x							
8501307	10X16.5 Premium 590TW	x	x							
8505207	31.5X13 Flotation 660TW	x	x							
8502107	10X16.5 Non-Pneumatic 640TW	x	x	x	x	x				
8501707	10X16.5 Heavy Duty 640TW			x	x	x				
8501807	10X16.5 Premium 640TW			x	x	x				
8502007	10X16.5 Severe Duty 640TW			x	x	x				
8503107	12X16.5 Heavy Duty 700TW			x	x	x	x	x	x	x
8503207	12X16.5 Premium 700TW			x	x	x	x	x	x	x
8503307	12X16.5 Premium Liner 700TW			x	x	x	x	x	x	x
8503407	12X16.5 Severe Duty 700TW					x	x	x	x	x
8503507	12X16.5 Mining 700TW					x	x	x	x	x
8503607	12X16.5 Non-Pneumatic 700TW					x	x	x	x	x
8505007	33X15.5 Flotation 760TW					x	x	x	x	x
8505107	14X17.5 Premium 760TW						x	x	x	x
8505307	14X17.5 Heavy Duty 760TW						x	x	x	x
8505407	14X17.5 Severe Duty 760TW						x	x	x	x



HEAVY DUTY



PREMIUM  
& PREMIUM W/LINER



SEVERE DUTY



NON-PNEUMATIC



MINING



FLOTATION

# VERSATILITY AND EFFECTIVENESS

## EASILY CONNECTED



### HIGH VERSATILITY

to undertake any type of job

Case skid steer loaders and compact track loaders can handle a broad range of attachments, providing outstanding versatility to serve a broad range of industries.



### FAST ATTACHMENT CHANGE OVER

Handle attachments easily

The Connect Under Pressure standard feature allows you to connect tool hoses without a wrench. With the hydraulic coupler option attachments can be changed rapidly without leaving the cab.



PLANER (350 mm)



PLANER (1.000 mm)



ASPHALT FLOAT



WHEEL COMPACTOR



ROCK WHEEL



HAMMER



BACKHOE BUCKET



CEMENT MIXER



SNOW BLOWER



SNOW BLADE



4X1 MULTIPURPOSE BUCKET



BROOM BUCKET



AUGER



FARM FORK



FORK & GRAPPLE



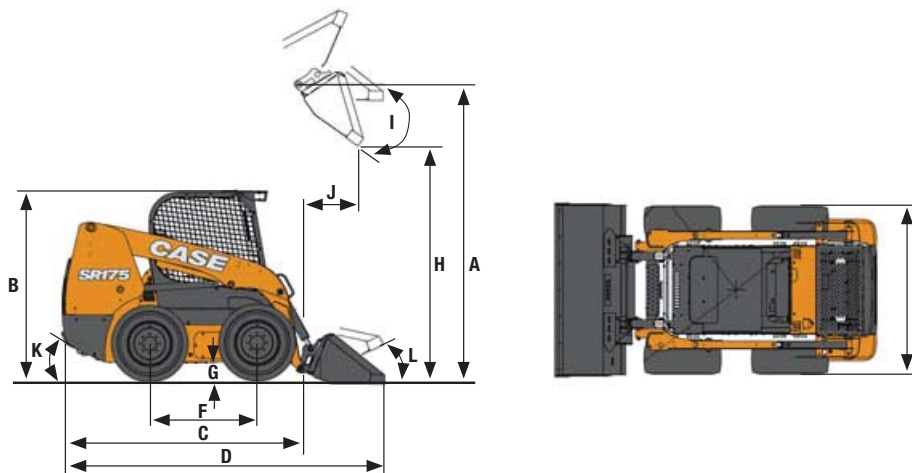
BALE SPIKE



Attachment	Application	Width (mm)	Depth (mm)	Weight (kg)	Flow	Compatible Model
<b>Rock Wheel</b>	Trenching jobs on hard, compact materials like asphalt and concrete, digging trenches on roads or in areas where movement is restricted.	Wheel width	Trench depth			
		80 - 130 - 200 80 - 130 - 200	150 - 450 200 - 600	1180 - 1255 1340 - 1595	High High	SR210 and bigger SR270 and bigger
<b>Wheel Compactor</b>	Compacting the bed of a trench before adding an asphalt surface layer.	Wheel width 200 - 250 - 300 350 - 400	0 - 750	710 - 970	Std	SR210 and bigger
<b>Planers</b>	Planning on asphalt or concrete. Overlaying road, industrial and courtyard surfaces. Maintenance of stretches of road. Restoration of damaged, bumpy or worn surfaces.	Drum width 350				
		450	0 - 110	590 - 750	Std	SR175 and bigger
		600	0 - 150	790 - 950	High	SR175 / SV185 / SR210 / TR270 / TR310
		1000	0 - 170 0 - 130	950 - 1110 1070 - 1250	High High	SR210 and bigger SR210 and bigger
<b>Asphalt Float</b>	Backfilling of trenches and widening road surface while maintaining the road's original gradient.	1900	N.A.	675	Std	SR210 and bigger
<b>Hammers</b>	Concrete demolition jobs, trenching and general excavation work. Several hammer tools available: moils, chisels, spades and compacting plates.	292	N.A.	180	Std	Small Frame models
		380	N.A.	275	Std / High	Medium and Large Frame models
		380	N.A.	385	High	Medium and Large Frame models
		400	N.A.	505	High	Large Frame models
<b>Backhoe Bucket</b>	Creation of trenches, foundations, drain and irrigation channels, etc. in private or public constructions, both for new or maintenance jobs. Several bucket sizes available.		Digging depth			
		1200	2480	520	Std	SR130 / SR160
		1600	2780	750	Std	SR175 / SV185 / SR210 / SR240
		1800	3260	1020	Std	SV280 and bigger
<b>Cement Mixer</b>	Production of cement for civil construction in isolated or difficult-to-access areas, or with limited availability of electric energy. Side discharge available.		Mixer capacity (lt)			
		1170	160	639	Std	SR160 and bigger
		1490	210	794	Std	SR175 and bigger
		1490	250	945	Std	SR210 and bigger
		1575	270	1013	Std	SR240 and bigger
		1700	320	1188	Std	SV280 and bigger
<b>Snow Blower</b>	Ideal for removing large amounts of snow without damaging the pavement. Features: effective icebreaker system, limited front height (740 mm), hydraulic chute rotation (240°)	1600	N.A.	420	Std	Small Frame models
		1800	N.A.	480	Std / High	"Medium and Large Frame Skid Steers
		2100	N.A.	540	Std / High	Medium Frame CTLs" SR210 and bigger models
<b>Snow Blade</b>	Tilttable blade (+/- 30°) designed to roll out and evacuate snow. Features: Anti-skock system to reposition automatically the blade in working position, sidelights to work safely.	2100	N.A.	315	Std	Small and medium frame models
		2400	N.A.	410	Std	Large frame models
<b>Dozer Blade</b>	General dozing applications	1980	N.A.	305	Std	Small and medium frame models
		2135	N.A.	288 - 358	Std	Medium and large frame skid steers
		2365	N.A.	328 - 370	Std	Medium frame CTLs
		2640	N.A.	650	Std	Large frame models
<b>Wide range of Buckets Dirt &amp; Foundry; Low Profile; Low Profile Extended, Heavy Duty, Light Material, Side Tip, High Tip</b>	Digging, excavating, grading, material handling		Capacity (m³)			
		1525	0.35 - 0.63	120 - 230	N.A.	SR130 / SR160
		1680	0.40 - 0.72	154 - 324	N.A.	SR175 / SV185 / SR210
		1830	0.48 - 0.99	220 - 342	N.A.	SR175 / SV185 / SR210
		1850	0.33 - 1.75	225 - 500	N.A.	SR240 / SR270 / SV280 / SV340 / TR270 / TR310
2080	0.32 - 2.00	250 - 540	N.A.	SR240 / SR270 / SV280 / SV340 / TR340 / TV380		
<b>4X1 Multipurpose Bucket</b>	Multipurpose bucket: applications as conventional bucket, grab for back filling or as a dozer		Capacity (m³)			
		1525	0.33 - 0.35	253 - 280	Std	Small frame models
		1680	0.40	283 - 320	Std	Medium frame skid steers
		1850	0.43 - 0.44	310 - 403	Std	Medium and large frame skid steers
2080	0.50	435 - 453	Std	Medium frame CTLs Large frame models		
<b>Broom Bucket</b>	Clearing yards, roads, footpaths, etc. Also efficient for snow clearance.		Capacity (m³)			
		1780	0.35	400	Std	Small Frame models
		1935	0.38	430	Std	Medium Frame models
		2100	0.43	460	Std	Medium Frame models
2335	0.48	490	Std	Large Frame models		
<b>Auger (Standard or High Flow drive motor)</b>	Boring of holes in the ground such as telegraph poles, electricity pylons, signposts, metallic frame pillars, tree and shrub planting.  Auger bits: diameter from 100 to 1050 mm Auger extensions: length from 300 to 1830 mm	N.A.	N.A.	144	Std	All
		100 - 1050	1168	84	High	SR175 and bigger
		N.A.	300 - 1830	13 - 49 9 - 30	Std / High Std / High	All All
<b>Farm Fork Fork &amp; Grapple</b>	Farm fork: General farm yard applications. Fork and Grapple: "Mucking out" bale and silage handling. Also suitable for industrial applications.		Capacity (m³)			
		1525	0.85	153 - 250	Std	Small Frame models
		1680	0.92	170 - 260	Std	Medium Frame Skid Steers
		1850	1.01	221 - 341	Std	"Medium and Large Frame Skid Steers
2080	1.14	211 - 381	Std	Medium Frame CTLs" Large Frame models		
<b>Pallet Fork</b>	Handling of palletizes loads. Hydraulically operated side-shift option available.	Forks length				
		1000	N.A.	126-308	N.A.	SR210 and smaller
		1100	N.A.	144-312	N.A.	SR210 and smaller
1200	N.A.	194-320	N.A.	All		
<b>Bale Spike</b>	Handling of round bales	980	N.A.	55	N.A.	All

# SKID STEER LOADERS

## COMPACT TRACK LOADERS



### GENERAL DIMENSIONS

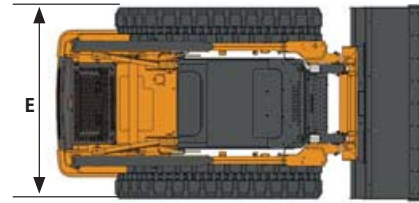
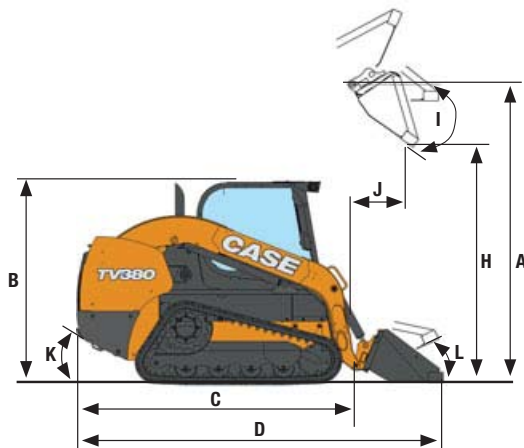
		SR130	SR160	SR175	SV185	SR210	SR240	SR270	SV280	SV340
A - Height to bucket hinge pin	mm	2845	2845	3099	3048	3124	3175	3175	3302	3343
B - Height to top of ROPS	mm	1919	1919	1974	1974	1998	2002	2002	2002	2042
C - Length without attachment	mm	2435	2435	2685	2685	2669	2981	3016	2990	3025
D - Length with bucket *	mm	3028	3028	3305	3345	3292	3611	3646	3604	3657
E - Overall width	mm	1518	1518	1678	1678	1755	1768	1768	1768	1930
F - Wheelbase	mm	941	941	1128	1128	1128	1322	1322	1322	1322
G - Ground clearance	mm	178	178	178	178	203	203	203	203	243
H - Dump height *	mm	2246	2246	2470	2380	2495	2562	2562	2629	2671
I - Dump angle	°	40	40	40	52	40	38	38	54	47
J - Dump reach @ max height	mm	469	469	542	783	517	575	575	744	630
K - Angle of departure	°	22	22	23	23	25	24	24	24	27
L - Rollback angle (bucket on ground)	°	26	26	32	35	31	31	31	35	35

### SPECIFICATIONS

		SR130	SR160	SR175	SV185	SR210	SR240	SR270	SV280	SV340
<b>FRAME SIZE</b>		Small	Small	Medium	Medium	Medium	Large	Large	Large	Large
<b>EMISSIONS LEVEL</b>		Tier 3	Tier 4F Stage IIIB	Tier 4F Stage IIIB	Tier 4F Stage IIIB	Tier 4F Stage IIIB	Tier 4F Stage IIIB	Tier 4F Stage IV	Tier 4F Stage IIIB	Tier 4F Stage IV
<b>PERFORMANCE SPECS</b>										
Rated Operating Capacity 50%	kg	590	725	790	840	905	1088	1225	1270	1545
ROC with counterweights 50%	kg	635	770	835	885	950	1178	1315	1360	1635
Tipping load	kg	1179	1455	1588	1678	1814	2177	2450	2540	3090
Lift cylinder breakout force**	kN	13.0	15.0	17.0	15.3	20.3	25.0	27.1	25.0	30.3
Bucket cylinder breakout force**	kN	19.0	23.4	32.3	24.7	32.3	39.4	38.6	33.7	42.4
<b>ENGINE</b>										
Engine make - Model		ISM N844L-D (Nat. Asp.)	ISM N844LT-F (Turbo)	ISM N844LTA-DI-F (Turbo)	ISM N844LTA-DI-F (Turbo)	FPT F5H (Turbo)	FPT F5H (Turbo)	FPT F5H (Turbo)	FPT F5H (Turbo)	FPT F5H (Turbo)
Displacement	l	2.2	2.2	2.2	2.2	3.4	3.4	3.4	3.4	3.4
Horsepower	hp/rpm	49 @ 2800	60 @ 2800	67 @ 2800	60 @ 2900	74 @ 2500	74 @ 2500	90 @ 2500	74 @ 2500	90 @ 2500
Peak torque	Nm/rpm	143 @ 1800	188 @ 1800	208 @ 1800	183 @ 1800	314 @ 1400	314 @ 1400	383 @ 1400	314 @ 1400	383 @ 1400
<b>TRAVEL SPEED</b>										
Low range	km/h	12.7	11.9	11.9	11.9	11.4	12.4	11.3	12.4	12.4
High range (optional)	km/h	NA	NA	18.5	18.5	16.9	18.5	18.5	18.5	18.5
<b>HYDRAULIC SYSTEM</b>										
Pump flow	LPM	59	70	78	78	92	92	92	92	92
Optional high flow	LPM	N/A	N/A	116	116	126	143	143	143	150
Relief pressure	bar	210	210	210	210	210	210	210	210	210
Optional enhanced high flow	bar	N/A	N/A	N/A	N/A	N/A	N/A	277	N/A	277
<b>WEIGHTS</b>										
Operating weight	kg	2300	2505	2842	2980	3160	3350	3681	3670	4136
Shipping weight	kg	2160	2370	2705	2840	3025	3200	3531	3475	3890
<b>SERVICE CAPACITY</b>										
Fuel tank	l	60.5	60.5	73.8	73.8	73.8	96.5	96.5	96.5	96.5



# SPECIFICATIONS



## GENERAL DIMENSIONS

		TR270	TR310	TR340	TV380
A - Height to bucket hinge pin	mm	3124	3124	3215	3342
B - Height to top of ROPS	mm	1998	1998	2043	2043
C - Length without attachment	mm	2669	2669	3016	3025
D - Length with bucket *	mm	3292	3292	3646	3639
E - Overall width	mm	1676	1888	1930	1930
F - Wheelbase	mm	NA	NA	NA	NA
G - Ground clearance	mm	203	203	243	243
H - Dump height *	mm	2495	2495	2602	2669
I - Dump angle	°	40	40	38	54
J - Dump reach @ max height	mm	568	568	548	798
K - Angle of departure	°	32	32	32	32
L - Rollback angle (bucket on ground)	°	31	31	30	34

## SPECIFICATIONS

		TR270		TR310		TR340		TV380	
<b>FRAME SIZE</b>		Medium		Medium		Large		Large	
<b>EMISSIONS LEVEL</b>		Tier 4F / Stage IIIB		Tier 4F / Stage IIIB		Tier 4F / Stage IV		Tier 4F / Stage IV	
<b>PERFORMANCE SPECS</b>									
Rated Operating Capacity 50%	kg	50%: 1225	35%: 860	50%: 1406	35%: 984	50%: 1542	35%: 1079	50%: 1723	35%: 1209
ROC with counterweights 50%	kg	50%: 1280	35%: 915	50%: 1461	35%: 1039	50%: 1767	35%: 1264	50%: 1948	35%: 1394
Tipping load	kg	2450		2810		3084		3447	
Lift cylinder breakout force**	kN	27.8		29.0		34.5		28.0	
Bucket cylinder breakout force**	kN	32.3		38.6		38.7		39.0	
<b>ENGINE</b>									
Engine make - Model		FPT F5H (Turbo)		FPT F5H (Turbo)		FPT F5H (Turbo)		FPT F5H (Turbo)	
Displacement	l	3.4		3.4		3.4		3.4	
Horsepower	hp/rpm	74 @ 2500		74 @ 2500		90 @ 2500		90 @ 2500	
Peak torque	Nm/rpm	314 @ 1400		314 @ 1400		383 @ 1400		383 @ 1400	
<b>TRAVEL SPEED</b>									
Low range	km/h	8,2		8,2		8,2		8,2	
High range (optional)	km/h	12,2		12,2		12,2		12,2	
<b>HYDRAULIC SYSTEM</b>									
Pump flow	LPM	92		92		92		92	
Optional high flow	LPM	123		123		143		143	
Relief pressure	bar	210		210		210		210	
Optional enhanced high flow	bar	N/A		N/A		277		277	
<b>WEIGHTS</b>									
Operating weight	kg	3750		4027		4536		4785	
Shipping weight	kg	3615		3891		4380		4630	
<b>SERVICE CAPACITY</b>									
Fuel tank	l	73.8		73.8		96.5		96.5	

\* With D&F Bucket - \*\* Breakout forces estimated considering both tip and hydraulic limits.

www.casece.com

**EXPERTS FOR THE REAL WORLD**  
**SINCE 1842**

# CASE

CONSTRUCTION



Form No. 20184GB - MediaCross Firenze - 03/18

**CNH INDUSTRIAL  
DEUTSCHLAND GMBH**  
Case Baumaschinen  
Benzstr. 1-3 - D-74076 Heilbronn  
DEUTSCHLAND

**CNH INDUSTRIAL FRANCE, S.A.**  
16-18 Rue des Rochettes  
91150 Morigny-Champigny  
FRANCE

**CNH INDUSTRIAL - UK**  
First Floor, Barclay Court 2,  
Heavens Walk,  
Doncaster - DN4 5HZ  
UNITED KINGDOM

**CNH INDUSTRIAL - SOUTH AFRICA**  
Waterfall Business Park  
Bekker Street, Howick Close  
1685 Midrand - Johannesburg  
REPUBLIC OF SOUTH AFRICA

**CNH INDUSTRIAL  
MAQUINARIA SPAIN, S.A.**  
Avda. José Gárate, 11  
28823 Coslada (Madrid)  
ESPAÑA

**CNH INDUSTRIAL ITALIA SPA**  
Strada di Settimo, 323  
10099 San Mauro Torinese (TO)  
ITALIA

**CASE CUSTOMER CENTRE  
PARIS**  
RN 330 - Penchard  
77122 - Monthyon  
FRANCE

**CNH INDUSTRIAL - MIDDLE EAST**  
DAFZA - Dubai Airport Free Zone  
West Wing 4 B, Office 642  
P.O. Box 54588, Dubai,  
UNITED ARAB EMIRATES

**NOTE:** Standard and optional fittings can vary according to the demands and specific regulations of each country. The illustrations may include optional rather than standard fittings - consult your Case dealer. Furthermore, CNH Industrial reserves the right to modify machine specifications without incurring any obligation relating to such changes.

Conforms to directive 2006/42/EC

**CASE**  
**00800-2273-7373**

The call is free from a land line.  
Check in advance with your Mobile Operator if you will be charged. Toll free number not available from all calling areas.