

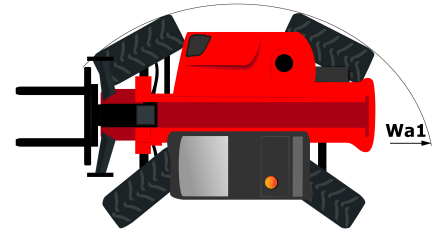
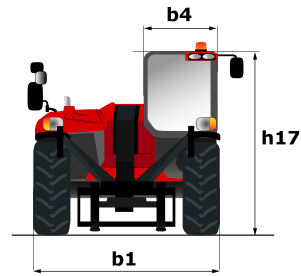
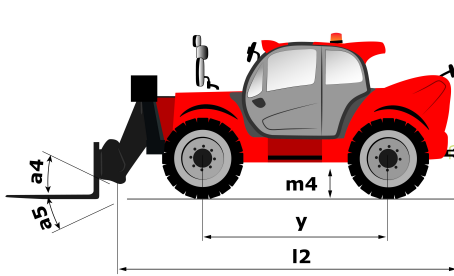
Technical sheet :

MHT 1490



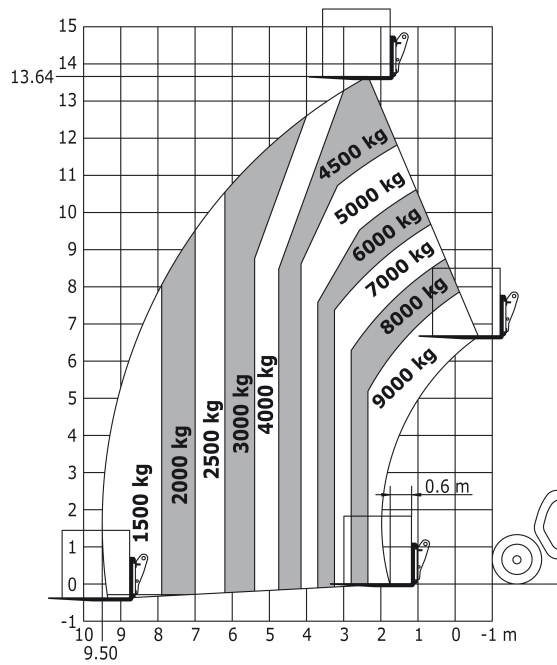
Capacities		Metric
Max. capacity	Q	9000 kg
Load centre of gravity	c	600 mm
Max. lifting height	h3	14 m
Max. Reach	l4	9.55 m
Weight and dimensions		
Unladen weight (with forks)		20800 kg
Ground clearance center	m4	0.44 m
Wheelbase	y	3.37 m
Overall width	b1	2.5 m
Overall height	h17	3 m
Overall cab width	b4	0.93 m
Tilt-down angle	a5	117 °
Tilt-up angle	a4	18 °
External turning radius (over tyres)	Wa1	4.01 m
Outer turning radius (with forks)	b15	4.01 m
tires		
Standard tyres		Aeolus - A2233 - 17.5 R25
Number of front wheels / rear wheels		2 / 2
Steering wheels (front / rear)		2 / 2
Drive wheels (front / rear)		2 / 2
Steering mode		2 wheel steer, 4 wheel steer, Crab mode
Engine		
Engine brand		Mercedes
Engine norm		Stage IV / Tier 4 Final
Engine model		OM934LA
Number of cylinders / Capacity of cylinders		4 - 5100 cm³
I.C. Engine power rating / Power (kW)		176 Hp / 129 kW
Max. torque / Engine rotation		1600 Nm@1600 tr/min
Engine cooling system		Water
Number of batteries		2
Battery / Batteries capacity		12 V / 120 Ah
Drawbar pull (Laden)		10900 daN
Transmission		
Transmission type		Hydrostatic
Number of gears (forward / reverse)		2 / 2
Max. travel speed (may vary according to applicable regulations)		31 km/h
Parking brake		Automatic Negative Hand-brake
Service brake		Hydraulic
Hydraulics		
Hydraulic pump type		Variable pump
Hydraulic flow - Pressure		180 l/min - 300 Bar
Tank capacities		
Engine oil		21 l
Hydraulic oil		275 l
Fuel tank		315 l
Diesel Exhaust fluid (AdBlue® type)		63 l
Noise and vibration		
Noise at driving position (LpA)		82 dB(A)
Noise to environment (LwA)		106 dB(A)
Vibration on hands/arms		0 Nm
Miscellaneous		
Safety cabin homologation		Cab ROPS - FOPS Level 2
Controls		JSM
Attachment recognition system (E-Reco)		Standard

Dimensional drawing

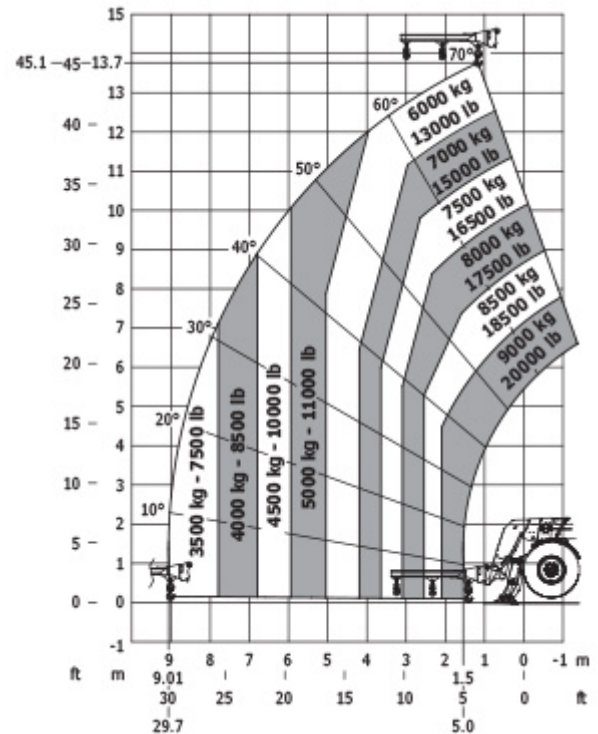


Load chart

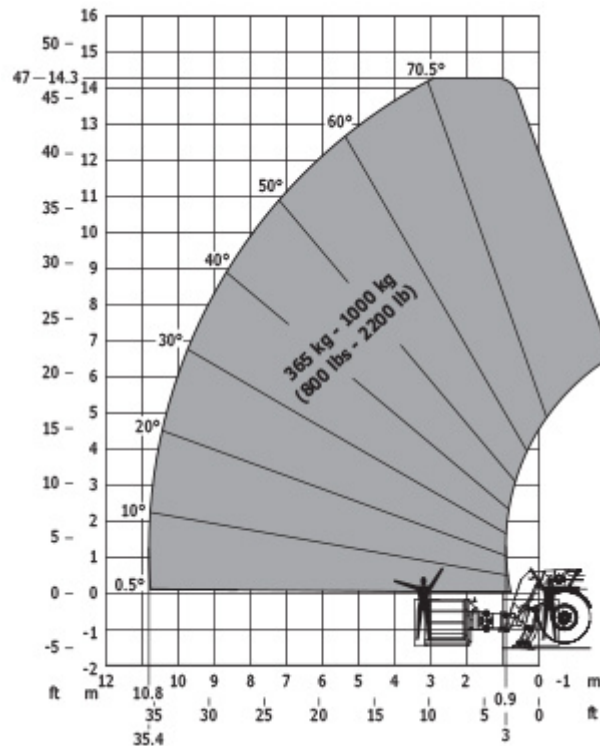
Machine on tyres with forks LC 600 mm Metric

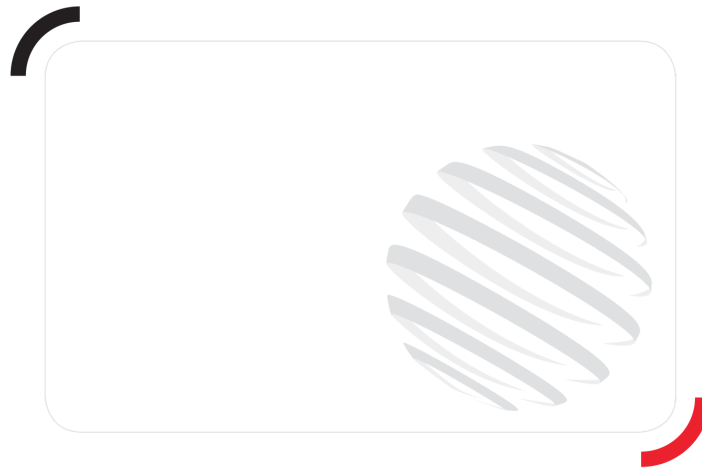


Machine on stabs with jib Metric



Machine on stabs with platform Metric





Siège Social
430 rue de l'Aubinière - 44150 Ancenis Cedex - France
Tel: +33(0)2 40 09 10 11 - Fax: +33 (0)2 40 09 10 97
www.manitou.com



This brochure describes versions and configuration options for Manitou products which may be fitted with different equipment. The equipment described in this brochure may be standard, optional or not available depending on version. Manitou reserves the right to change the specifications shown and described at any time and without prior warning. The manufacturer is not liable for the specifications given. For more information, contact your Manitou dealer. Non-contractual document. Product descriptions may differ from actual products. List of specifications is not comprehensive. The logos and visual identity of the company are the property of Manitou and may not be used without authorisation. All rights reserved. The photos and diagrams contained in this brochure are provided for information only.

MANITOU BF SA - Limited company with board of directors - Share capital: 39,668,399 euros - 857 802 508
RCS Nantes