

Technical sheet :

260 TJ+ ST5

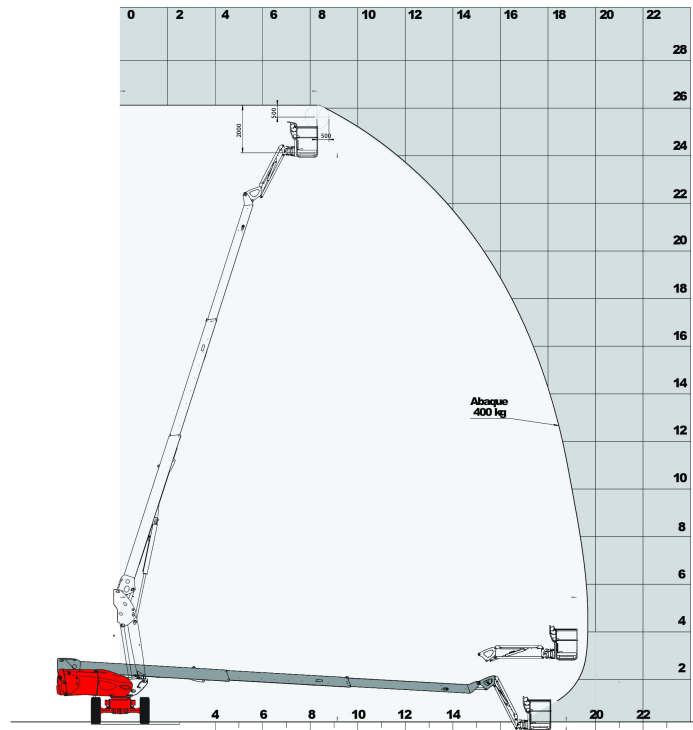


Capacities		Metric
Working height	h21	25.89 m
Platform height*	h7	23.89 m
Max. outreach	l4	19.7 m
Pendular arm rotation (top / bottom)		-63 ° / 70.3 °
Platform capacity	Q	400 kg
Turret rotation		360 °
Platform rotation (right / left)		90 ° / 90 °
Number of people (inside / outside)		3 / 3
Weight and dimensions		
Platform weight*		16400 kg
Platform dimensions (length x width)	lp / ep	2.3 m x 0.9 m
Overall width	b1	2.48 m
Overall length	l1	10.84 m
Overall height	h17	2.71 m
Overall length (stowed)	l9	7.88 m
Overall height (stowed)	h18	2.8 m
Floor height (access)	h20	0.48 m
Jib length	l13	2.4 m
Counterweight offset (turret at 90°)	a7	1.43 m
Internal turning radius (over tyres)	b13	1.97 m
Outer turning radius	Wa3	4.35 m
Ground clearance at centre of wheelbase	m2	0.42 m
Wheelbase	y	2.8 m
Performances		
Drive speed - stowed		4.5 km/h
Drive speed - raised		0.8 km/h
Gradeability		40 %
Permissible leveling		4 °
Wheels		
Tyres type		Solid Tyres Cured-On
Dimensions of front wheels / rear wheels		1025 x 365 - 1025 x 365
Drive wheels (front / rear)		2 / 2
Steering wheels (front / rear)		2 / 2
Braking wheels (front / rear)		2 / 2
Engine/Battery		
Engine brand / model / norm		Yanmar - 4TNV88C - Stage 5
I.C. Engine power rating / Power (kW)		46 Hp / 34.3 kW
Miscellaneous		
Ground Pressure		21.3 daN/cm²
Hydraulic Pressure		400 Bar
Hydraulic tank capacity		94 l
Fuel tank		76 l
Noise to environment (LwA)		102 dB(A)
Vibration on hands/arms		0.5 Nm
Standards compliance		
This machine is in compliance with:		European directives: 2006/42/EC- Machinery (revised EN280:2013) - 2004/108/EC (EMC) - 2006/95/EC (Low voltage)

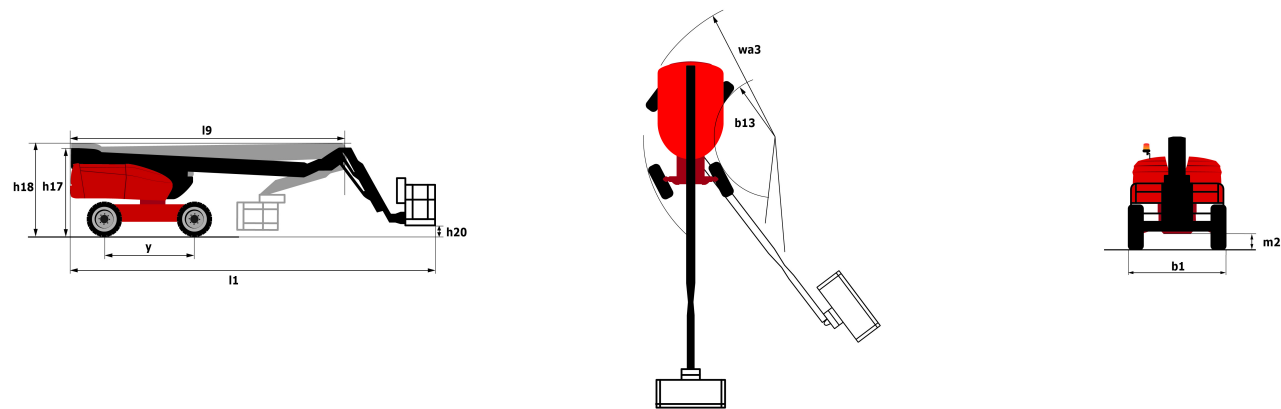
** According to "REDUCE cycle"

Load chart

Load Chart for AWP Metric



Dimensional drawing



Equipment

Standard
230V Predisposition
4 simultaneous movements
4 wheel drive
4 wheel steer with crab mode
Audible alarm and illuminated indicator lamp (leveling, overload, lowering)
Backup electrical pump
Connected machine
Continuous turret rotation
Differential locking on rear axle
Easy Manager
Electronic platform compensation
Emergency stop button in platform and on frame
Engine mounted on sliding platform
Engine with DPF
Front axle with limited slip
Fuel gauge with low level indicator
Hour meter
Integrated diagnostic assistance
LED rotating beacon
Large basket with three entries
Operator presence pedal
Oscillating front axle
Remote control
Stop & Go system
Turret orientation information
X Y function
Optional
110 or 230V plug with differential circuit breaker
Access control keypad for easy link
Additional storage boxes
Air predisposition
Battery blanket
Battery charger
Battery cut-off

Optional

Beep on every movement

Beep upon travel

Biodegradable oil

Engine Block Heater

Engine preheat

Hydraulic oil heater

Key lock on fuel tank

Large basket 2.30m with lateral door

Narrow basket 1.80m

Non-marking tyres

Onboard generator (3,5 or 5 kW)

Panel cradle

Panel support kit

Pipe cradle

SPS : Secondary protection system

Safety kit (Harness + helmet)

Safety valve

Socket 230 V + differential circuit breaker

Spark arrester

Tube support kit

Working light



Siège Social

430 rue de l'Aubinière - 44150 Ancenis Cedex - France

Tel: +33(0)2 40 09 10 11 - Fax: +33 (0)2 40 09 10 97

www.manitou.com



This brochure describes versions and configuration options for Manitou products which may be fitted with different equipment. The equipment described in this brochure may be standard, optional or not available depending on version. Manitou reserves the right to change the specifications shown and described at any time and without prior warning. The manufacturer is not liable for the specifications given. For more information, contact your Manitou dealer. Non-contractual document. Product descriptions may differ from actual products. List of specifications is not comprehensive. The logos and visual identity of the company are the property of Manitou and may not be used without authorisation. All rights reserved. The photos and diagrams contained in this brochure are provided for information only.

MANITOU BF SA - Limited company with board of directors - Share capital: 39,668,399 euros - 857 802 508
RCS Nantes