

Technical sheet :

# **220 TJ ST5**

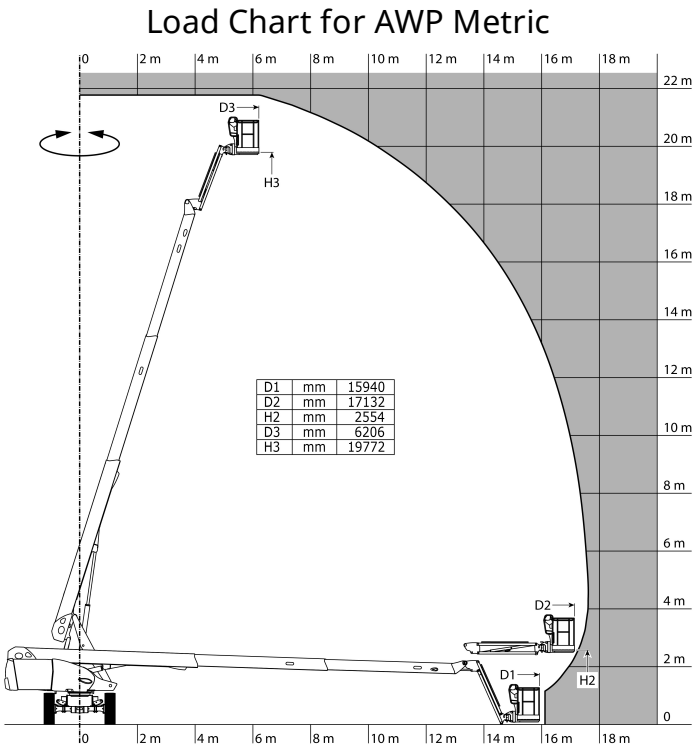
---



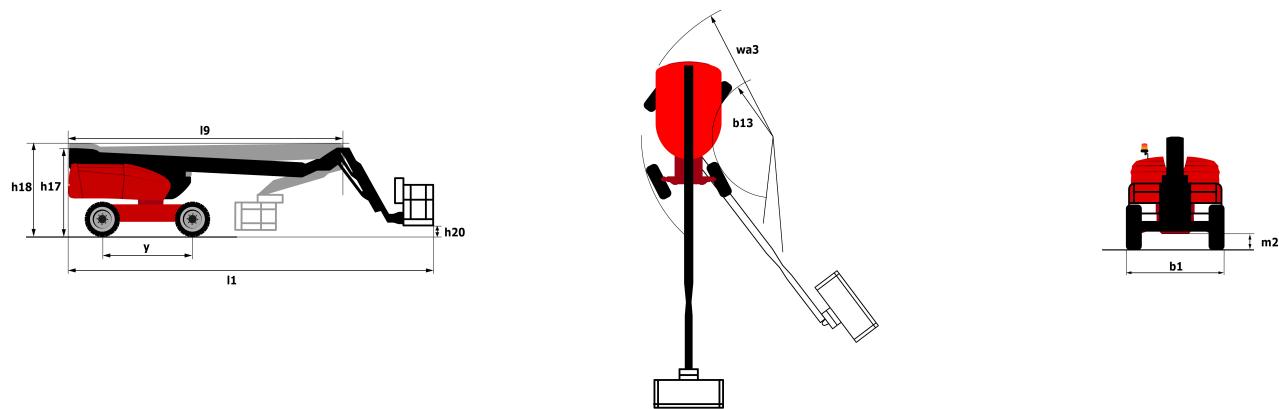
Capacities		Metric
Working height	h21	21.77 m
Platform height*	h7	19.77 m
Max. outreach	l4	17.63 m
Pendular arm rotation (top / bottom)		69 ° / -66 °
Platform capacity	Q	230 kg
Turret rotation		360 °
Platform rotation (right / left)		90 ° / 90 °
Number of people (inside / outside)		2 / 2
Weight and dimensions		
Platform weight*		11850 kg
Platform dimensions (length x width)	lp / ep	2.1 m x 0.8 m
Overall width	b1	2.48 m
Overall length	l1	9.8 m
Overall height	h17	2.66 m
Overall length (stowed)	l9	7.29 m
Overall height (stowed)	h18	2.72 m
Floor height (access)	h20	0.39 m
Jib length	l13	2 m
Counterweight offset (turret at 90°)	a7	1.35 m
Internal turning radius (over tyres)	b13	2.96 m
Outer turning radius	Wa3	6.19 m
Ground clearance at centre of wheelbase	m2	0.44 m
Wheelbase	y	2.8 m
Performances		
Drive speed - stowed		4.4 km/h
Drive speed - raised		1 km/h
Gradeability		40 %
Permissible leveling		4 °
Wheels		
Tyres type		Solid Tyres Cured-On
Dimensions of front wheels / rear wheels		1025 x 365 - 1025 x 365
Drive wheels (front / rear)		2 / 2
Steering wheels (front / rear)		2 / 0
Braking wheels (front / rear)		0 / 2
Engine/Battery		
Engine brand / model / norm		Kubota - 3TNV88C - Stage 5
I.C. Engine power rating / Power (kW)		36.2 Hp / 27.5 kW
Miscellaneous		
Ground Pressure		18.2 daN/cm²
Hydraulic Pressure		340 Bar
Hydraulic tank capacity		94 l
Fuel tank		72 l
Noise to environment (LwA)		105 dB(A)
Vibration on hands/arms		0.5 Nm
Standards compliance		
This machine is in compliance with:		European directives: 2006/42/EC- Machinery (revised EN280:2013) - 2004/108/EC (EMC) - 2006/95/EC (Low voltage)

\*Varies according to options and standards of the country to which the machine is delivered

# Load chart



## Dimensional drawing



## Equipment

Standard
230V Predisposition
4 simultaneous movements
4 wheel drive
Audible alarm and illuminated indicator lamp (leveling, overload, lowering)
Backup electrical pump
Connected machine
Continuous turret rotation
Differential locking on rear axle
Easy Manager
Easy fast slinging system
Electronic platform compensation
Emergency stop button in platform and on frame
Engine mounted on sliding platform
Engine with DPF
Front axle with limited slip
Fuel gauge with low level indicator
Fully galvanized basket with demountable floor
Hour meter
Integrated diagnostic assistance
LED rotating beacon
LS pump
Leveling unlocking
Oscillating front axle
Proportional controls
Stop & Go system
Optional
110 or 230V plug with differential circuit breaker
Access control keypad for easy link
Air predisposition
Battery blanket
Battery cut-off
Beep on every movement
Beep upon travel
Biodegradable oil

Optional
Engine Block Heater
Exhaust purifier
Extreme cold oil
Galvanized basket 2,100 mm
Hydraulic oil heater
Key lock on fuel tank
Non-marking tyres
Onboard generator (3,5 or 5 kW)
Personalized paintwork
Remote control
SPS : Secondary protection system
Safety harness
Safety kit (Harness + helmet)
Safety valve
Screen protection on the lower box control
Socket 230 V + differential circuit breaker
Spark arrester
Turret cover with key lock
Turret orientation information
Water predisposition
Working light



Siège Social  
430 rue de l'Aubinière - 44150 Ancenis Cedex - France  
Tel: +33(0)2 40 09 10 11 - Fax: +33 (0)2 40 09 10 97  
[www.manitou.com](http://www.manitou.com)



This brochure describes versions and configuration options for Manitou products which may be fitted with different equipment. The equipment described in this brochure may be standard, optional or not available depending on version. Manitou reserves the right to change the specifications shown and described at any time and without prior warning. The manufacturer is not liable for the specifications given. For more information, contact your Manitou dealer. Non-contractual document. Product descriptions may differ from actual products. List of specifications is not comprehensive. The logos and visual identity of the company are the property of Manitou and may not be used without authorisation. All rights reserved. The photos and diagrams contained in this brochure are provided for information only.

MANITOU BF SA - Limited company with board of directors - Share capital: 39,668,399 euros - 857 802 508  
RCS Nantes