

Technical sheet :

200 ATJ E

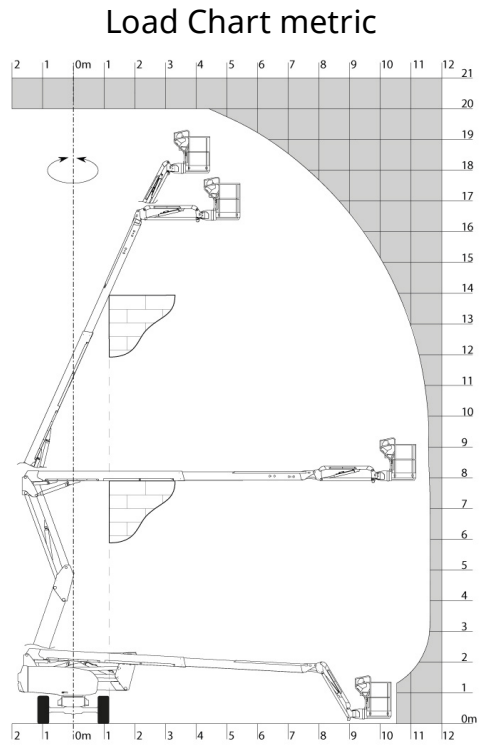
OXYGEN
by **MANITOU**



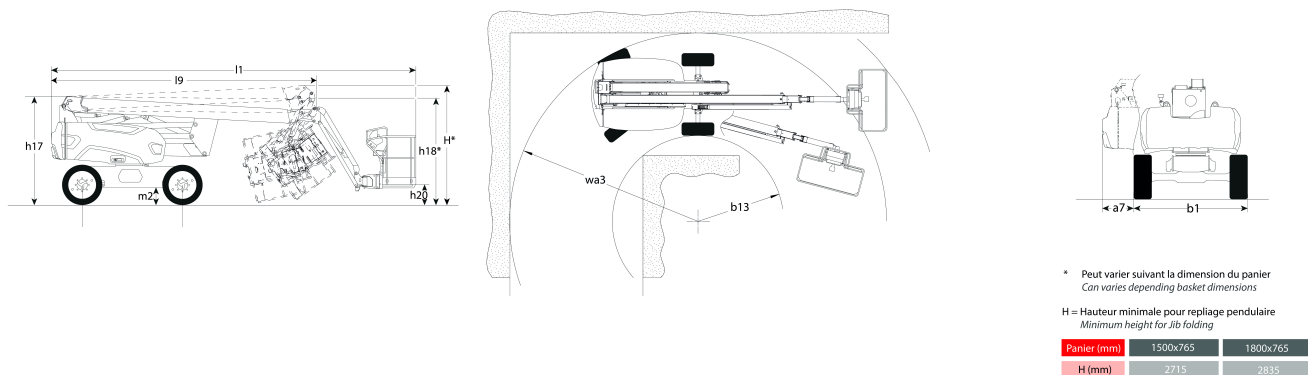
| Capacities | | Metric |
|---|---------|--|
| Working height | h21 | 20 m |
| Platform height* | h7 | 18 m |
| Max. outreach | l4 | 11.57 m |
| Overhang | l5 | 7.9 m |
| Pendular arm rotation (top / bottom) | | 65 ° / -60 ° |
| Platform capacity | Q | 230 kg |
| Turret rotation | | 350 ° |
| Platform rotation (right / left) | | 90 ° / 90 ° |
| Number of people (inside / outside) | | 2 / 2 |
| Weight and dimensions | | |
| Platform weight* | | 7100 kg |
| Platform dimensions (length x width) | lp / ep | 1.5 m x 0.75 m |
| Overall width | b1 | 2.32 m |
| Overall length | l1 | 8.34 m |
| Overall height | h17 | 2.46 m |
| Overall length (stowed) | l9 | 6.06 m |
| Overall height (stowed) | h18 | 2.71 m |
| Floor height (access) | h20 | 0.4 m |
| Counterweight offset (turret at 90°) | a7 | 0.64 m |
| Internal turning radius (over tyres) | b13 | 2.42 m |
| Outer turning radius | Wa3 | 5.31 m |
| Ground clearance at centre of wheelbase | m2 | 0.38 m |
| Wheelbase | y | 2.3 m |
| Performances | | |
| Drive speed - stowed | | 5.3 km/h |
| Drive speed - raised | | 0.7 km/h |
| Gradeability | | 45 % |
| Permissible leveling | | 4 ° |
| Wheels | | |
| Tyres type | | Solid non-marking tires |
| Drive wheels (front / rear) | | 2 / 2 |
| Steering wheels (front / rear) | | 2 / 0 |
| Braking wheels (front / rear) | | 0 / 2 |
| Engine/Battery | | |
| Battery / Batteries capacity | | 48 V / 460 Ah |
| Integrated charger (V / Ah) | | 48 V / 60 Ah |
| Miscellaneous | | |
| Ground Pressure | | 10.9 daN/cm ² |
| Hydraulic Pressure | | 240 Bar |
| Hydraulic tank capacity | | 25 l |
| Standards compliance | | |
| This machine is in compliance with: | | European directives: 2006/42/EC- Machinery (revised EN280:2013) - 2004/108/EC (EMC) - 2006/95/EC (Low voltage) |

*Varies according to options and standards of the country to which the machine is delivered

Load chart



Dimensional drawing



Equipment

Standard

- 230V Predisposition
- 4 simultaneous movements
- 4 wheel drive
- Audible alarm and illuminated indicator lamp (leveling, overload, lowering)
- Backup electrical pump
- CAN bus technology
- Centralized recharging of battery
- Dead man pedal
- Differential locking on rear axle
- Easy Manager
- Emergency stop button in platform and on frame
- Flat Led Rotating Beacon
- Fully galvanized basket with demountable floor
- Integrated diagnostic assistance
- Large color screen on turret
- Lead acid batteries
- Multi-voltage integrated charger
- Non-marking tyres
- Oscillating front axle
- Protective cover for control panel
- Screen information in the basket
- Simplified lift system
- Tool box in platform
- Travel possible at maximum height
- Two electric motors of 8.5kW and 16kW

Optional

- 110 or 230V plug with differential circuit breaker
- Access control keypad for easy link
- Air predisposition
- Beep on every movement
- Beep upon travel
- Biodegradable hydraulic oil
- Biodegradable oil
- Coded anti-start

Optional

Easy link with remote lock

Fully galvanized basket 1500mm with lateral door

Fully galvanized basket 1800mm with lateral door

Galvanized basket 1,800 mm

Hydraulic oil heater

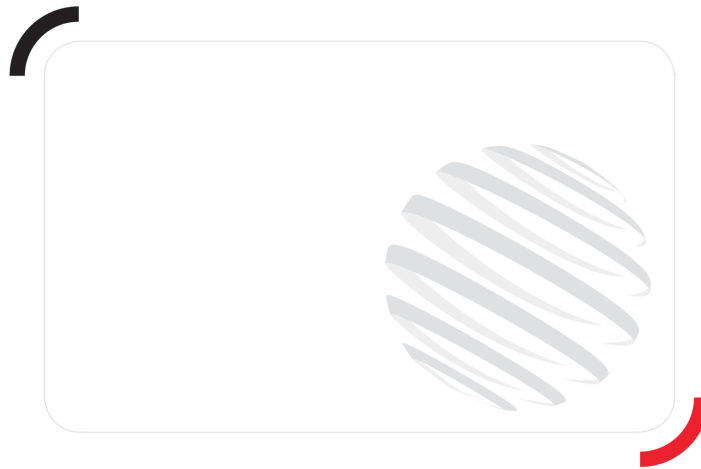
SPS : Secondary protection system

Safety kit (Harness + helmet)

Turret cover with key lock

Water predisposition

Working headlight in platform



Siège Social

430 rue de l'Aubinière - 44150 Ancenis Cedex - France

Tel: +33(0)2 40 09 10 11 - Fax: +33 (0)2 40 09 10 97

www.manitou.com



This brochure describes versions and configuration options for Manitou products which may be fitted with different equipment. The equipment described in this brochure may be standard, optional or not available depending on version. Manitou reserves the right to change the specifications shown and described at any time and without prior warning. The manufacturer is not liable for the specifications given. For more information, contact your Manitou dealer. Non-contractual document. Product descriptions may differ from actual products. List of specifications is not comprehensive. The logos and visual identity of the company are the property of Manitou and may not be used without authorisation. All rights reserved. The photos and diagrams contained in this brochure are provided for information only.

MANITOU BF SA - Limited company with board of directors - Share capital: 39,668,399 euros - 857 802 508
RCS Nantes