

**LM1330/LM1333**  
**LM1340/LM1343/LM1345**  
**LM1443/LM1445**  
**LM1745**



TELEHANDLERS TURBO

 **NEW HOLLAND**

LM1330/LM1333  
LM1340/LM1343/LM1345  
LM1443/LM1445/LM1745

## A FULL RANGE



**8** models to ensure the best version/equipment for the most diverse applications.  
The winning features of all models in the range are:

- top quality comfort
- operational stability at the top of their category
- all movements can be controlled for total safety and precision
- all round visibility



**A**vailable stabilisers (depending on model):

- narrow – where a small width is essential
- wide – for all applications requiring total operational stability



# VISIBILITY AND OPERATIONAL COMFORT

**T**he spacious cab offers the best visibility currently available on the market. Its rounded front profile and large glass area give the operator total control both with the arms fully raised and in restricted working spaces.



**C**ab door opens to 180° and secures at the fully open position. The door is constructed in two sections to enable the upper section to be opened independently.



LM1330/LM1333  
LM1340/LM1343/LM1345  
LM1443/LM1445/LM1745

# OPERATIONAL COMFORT



**A** living room for the operator. The instruments and controls are ergonomically located to ensure unbeatable comfort and safety. The cab's internal surfaces are coated with ABS plastic for quick and effective cleaning.



**T**he continuously adjustable tilting steering column provides in the standard version a full range of operator's adjustments.



**S**ingle lever manipulator electro-hydraulically controlled. 9 functions provide complete control of all operations. Proportional control of arm extension provides maximum precision in load positioning.



# HYDRAULIC SYSTEM TRANSMISSION

The “Load Sensing - Flow Sharing” hydraulic system grants totally independent movements. The rear-mounted control/valve is fully accessible without the need to move other components.



**C**NH TURBO 3.9 I engine  
The longitudinal engine mount ensures easy service.



**T**he transmission, PowerShift type 4+3 speeds, provides excellent precision in approach and positioning operations. High transfer speed: 35 km/h.



LM1330/LM1333  
LM1340/LM1343/LM1345  
LM1443/LM1445/LM1745

## EASE OF OPERATION



**O**utstanding steering radius (3.89 m) for working even in the most restricted areas.  
4 wheel steering with 3 positions:

- front wheels only
- all 4 wheels
- crab



LM1330 TURBO - 3000 kg  
LM1333 TURBO - 3300 kg  
LM1340 TURBO - 4000 kg  
LM1343 TURBO - 4300 kg  
LM1345 TURBO - 4500 kg  
LM1443 TURBO - 4300 kg  
LM1445 TURBO - 4500 kg  
LM1745 TURBO - 4500 kg

**S**uperior lifting capacity and operational stability. The best on the market.





PERFORMANCE		LM1330	LM1333 with stab. down
Maximum lift capacity (at 500 mm from fork heel)	kg	3000	3300
Maximum lift height	m	12.7	13.0
Lift capacity at maximum reach	kg	400	1250
Lift capacity at maximum lift height	kg	1500	2500
Reach fully raised	m	2.00	1.00
Maximum forward reach	m	8.75	8.75
Height with max load (3000/3300 kg)	m	6.80	8.40
Break out force	daN	7750	7750
Operating weight	kg	9550	9900

ENGINE			
Make <b>CNH</b> and model (optional)		F4GE0404B*D	F4GE0454C*D
Type		Nat. Asp.	Turbo
Total displacement	ltr	4.5	
Net flywheel power (ISO 14396)	kW/hp	60/82	71/97
Max torque	Nm	320@1400 rpm	400@1400 rpm

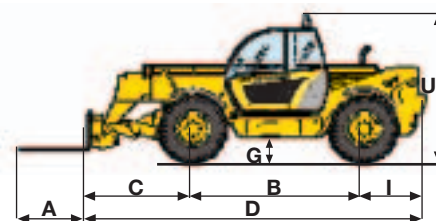
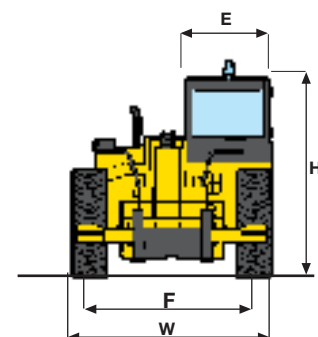
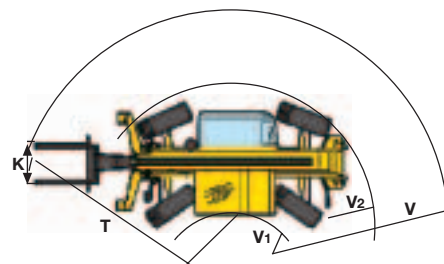
\* The two engines may be mounted upon request on both machines

TRANSMISSION			
Type		PowerShift	
Forward/Reverse speeds		4/3	
Max speed on road**	Km/h	28	34

\*\* Max. speed limited according to the country's legislations

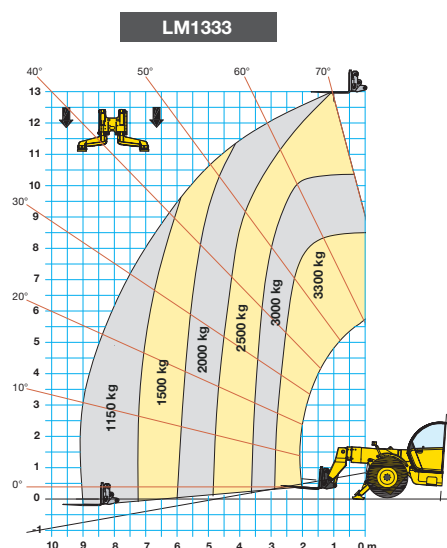
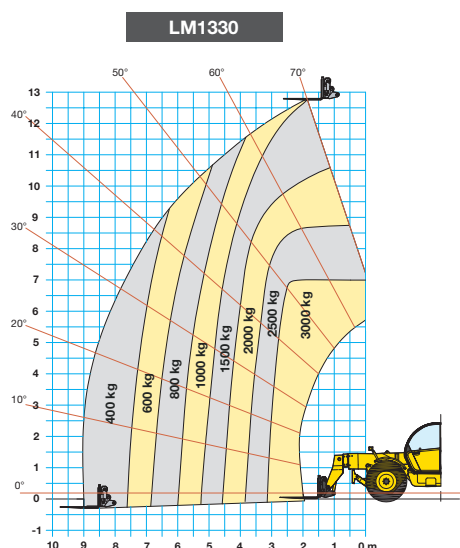
HYDRAULIC SYSTEM			
Type		Load Sensing	
Hydraulic controls		Servo	
Simultaneous movement		yes	
Hydraulic pump		gear	
Hydraulic flow	l/min	115	
Hydraulic pressure	bar	240	

CAPACITIES			
Fuel tank	ltr	135	
Hydraulic tank	ltr	180	



TYRES		
15.5x22.5		MICHELIN
400/80x20		SOLIDEAL
400/80x24		DUNLOP
400/70x20		DUNLOP

DIMENSIONS	A	B	C	D	E	F	G	H	I	K	T	U	V	V <sub>1</sub>	V <sub>2</sub>	W
With 24" rims	1200	3120	1730	5900	1000	2050	402	2450	1050	1260	4600	2730	5445	980	3890	2445
With 20" rims	1200	3120	1730	5900	940	2040	390	2435	1050	1260	4600	2715	5445	980	3890	2445





PERFORMANCE		LM1340 without Stab.	LM1343 with small Stab.	LM1345 with large Stab.
Maximum lift capacity (at 500 mm from fork heel)	kg	4000	4300	4500
Maximum lift height	m	12.30	12.45	12.45
Lift capacity at maximum reach	kg	700	1700	1800
Lift capacity at maximum lift height	kg	2000/2600*	3600	4000
Reach fully raised	m	1.20	0.50	0.00
Maximum forward reach	m	8.65	8.65	8.65
Height with max load (4000/4500 kg)	m	8.50/9.50*	8.30	8.20
Break out force	daN	7750	7750	7750
Operating weight	kg	10200	10400	10630

\* Machine with rear axle lock (optional)

ENGINE	
Make and model	CNH F4GE0484G*D
Type	Diesel turbo aftercooler
Total displacement	litr
Net flywheel power (ISO 14396)	kW/hp
Max torque	Nm

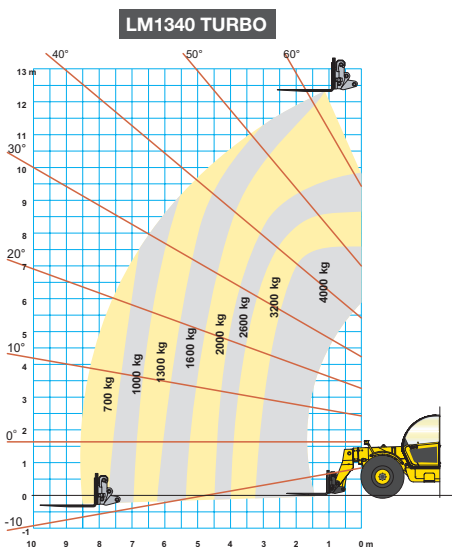
TRANSMISSION	
Type	PowerShift
Forward/Reverse speeds	4/3
Max speed on road**	Km/h

\*\* Max. speed limited according to the country's legislations

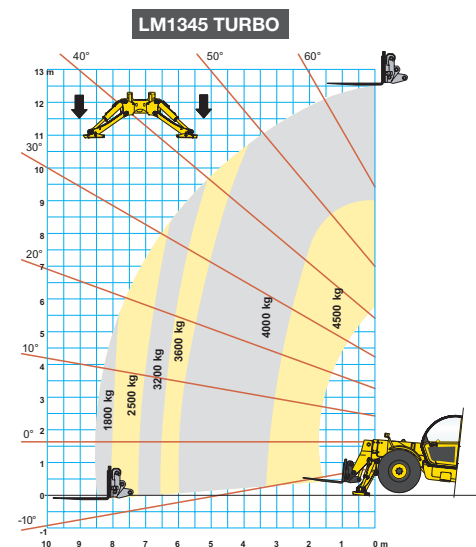
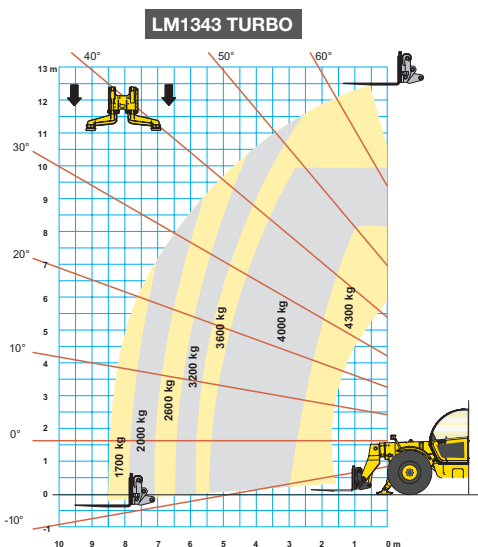
HYDRAULIC SYSTEM	
Type	Load Sensing
Hydraulic controls	Servo
Simultaneous movement	yes
Hydraulic pump	gear
Hydraulic flow	l/min
Hydraulic pressure	bar

CAPACITIES	
Fuel tank	litr
Hydraulic tank	litr

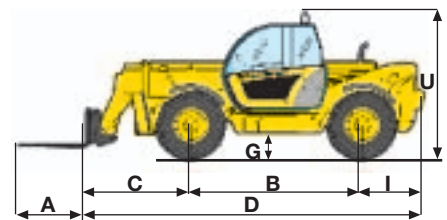
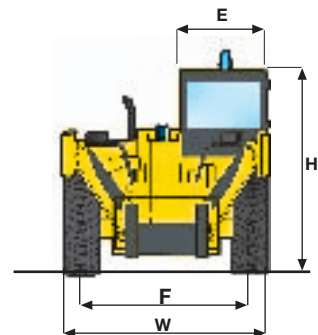
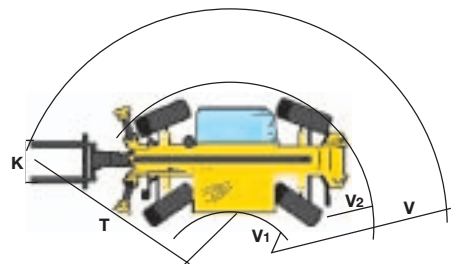
DIMENSIONS (with MITAS 405/70x24)	A	B	C	D	E	F	G	H	I	K	T	U	V	V <sub>1</sub>	V <sub>2</sub>	W
mm	1200	3120	1617	5850	1000	2050	402	2450	1100	1260	4396	2730	5204	980	3890	2445



without optional rear axle lock



EN 1459/B



TYRES	
13.00x24	GOOD-YEAR
15.5x25	MICHELIN
405/70x24	MITAS
400/80x24	DUNLOP

PERFORMANCE		LM1443 with small Stab.	LM1445 with large Stab.
Maximum lift capacity (at 500 mm from fork heel)	kg	4300/4000*	4500/4000*
Maximum lift height	m	13.55/13.30*	13.55/13.30*
Lift capacity at maximum reach	kg	1400/650*	1500/650*
Lift capacity at maximum lift height	kg	3000/1700*	3600/1700*
Reach fully raised	m	0.50/1.00*	0.30/1.00*
Maximum forward reach	m	9.33/9.33*	9.33/9.33*
Height with max load (4300/4500 kg)	m	8.90/7.30*	11.40/7.30*
Break out force	daN	7750/7750*	7750/7750*
Operating weight	kg	11330	11460

\*Machine with rear axle lock (optional)

ENGINE	
Make and model	CNH F4GE0484G*D
Type	Diesel turbo aftercooler
Total displacement	ltr 4.5
Net flywheel power (ISO 14396)	kW/hp 82/112
Max torque	Nm 480@1400 rpm

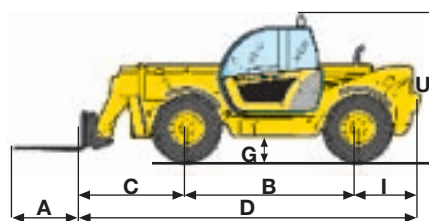
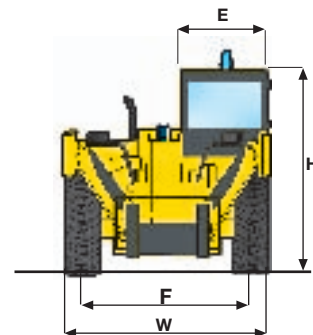
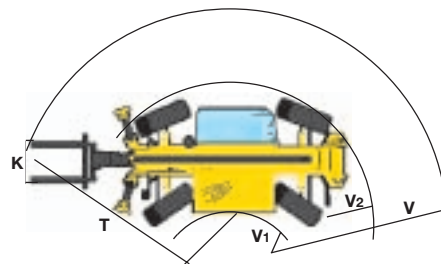
TRANSMISSION	
Type	PowerShift
Forward/Reverse speeds	4/3
Max speed on road**	Km/h 35

\*\* Max. speed limited according to the country's legislations

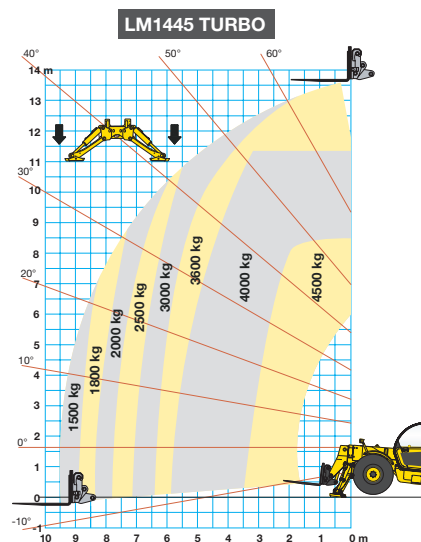
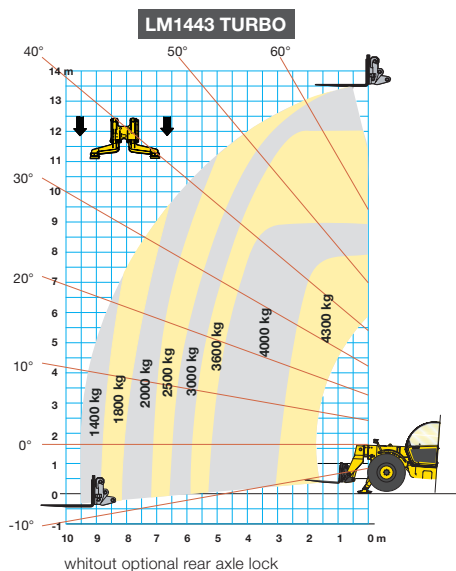
HYDRAULIC SYSTEM	
Type	Load Sensing
Hydraulic controls	Servo
Simultaneous movement	yes
Hydraulic pump	gear
Hydraulic flow	l/min 115
Hydraulic pressure	bar 240

CAPACITIES	
Fuel tank	ltr 135
Hydraulic tank	ltr 180

DIMENSIONS (with MITAS 405/70x24)	A	B	C	D	E	F	G	H	I	K	T	U	V	V <sub>1</sub>	V <sub>2</sub>	W
mm	1200	3120	1617	5850	1000	2050	402	2450	1100	1260	4552	2730	5390	980	3890	2445



TYRES	
13.00x24	GOOD-YEAR
15.5x25	MICHELIN
405/70x24	MITAS
400/80x24	DUNLOP



EN 1459/B



PERFORMANCE		LM1745 with stab. up	LM1745 with stab. down
Maximum lift capacity (at 500 mm from fork heel)	kg	4000	4500
Maximum lift height	m	16.24	16.60
Lift capacity at maximum reach	kg	-	450
Lift capacity at maximum lift height	kg	700	3000
Reach fully raised	m	2.00	1.00
Maximum forward reach	m	12.54	12.54
Height with max load (4000/4500 kg)	m	7.40	7.95
Break out force	daN	7750	7750
Operating weight	kg	12300	12300

ENGINE	
Make and model	CNH F4GE0484G*D
Type	Diesel turbo aftercooler
Total displacement	litr
Net flywheel power (ISO 14396)	kW/hp
Max torque	Nm

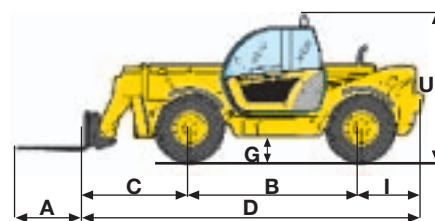
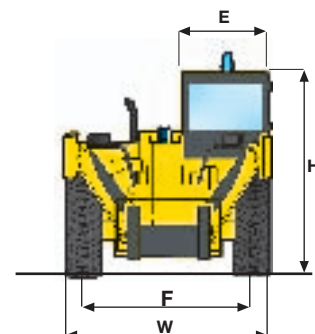
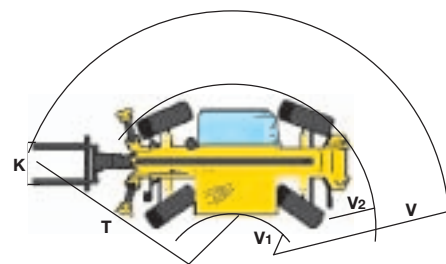
TRANSMISSION	
Type	PowerShift
Forward/Reverse speeds	4/3
Max speed on road**	Km/h

\*\* Max. speed limited according to the country's legislations

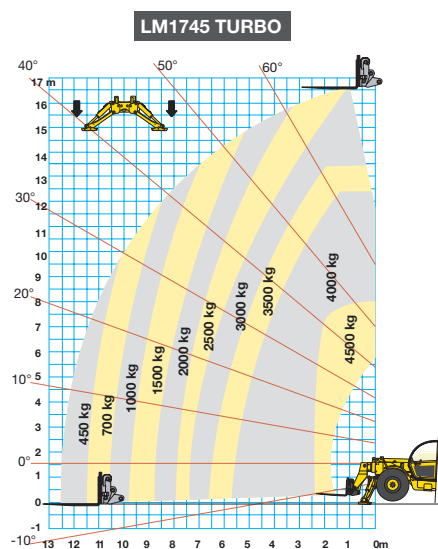
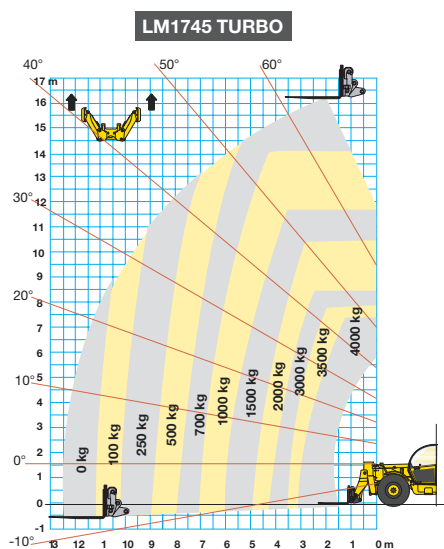
HYDRAULIC SYSTEM	
Type	Load Sensing
Hydraulic controls	Servo
Simultaneous movement	yes
Hydraulic pump	gear
Hydraulic flow	l/min
Hydraulic pressure	bar

CAPACITIES	
Fuel tank	litr
Hydraulic tank	litr

DIMENSIONS (with MITAS 405/70x24)	A	B	C	D	E	F	G	H	I	K	T	U	V	V <sub>1</sub>	V <sub>2</sub>	W
mm	1200	3120	1902	6135	1000	2050	402	2450	1100	1260	4598	2730	5445	980	3890	2445



TYRES	
13.00x24	GOOD-YEAR
15.5x25	MICHELIN
405/70x24	MITAS
400/80x24	DUNLOP





# PARTS & SERVICE

**T**he New Holland dealer network is, in itself, the best guarantee of continued productivity for the machines it delivers to its customers. New Holland service technicians are fully equipped to resolve all maintenance and repair issues, with each and every service point providing the high standards they are obliged to observe under New Holland's stringent quality guidelines.

The New Holland global parts network ensures fast, reliable, replacement parts for less downtime, increased productivity and, of course, profitable operation for its customers.

## AT YOUR OWN DEALERSHIP

The information contained in this brochure is intended to be a general nature only. The NEW HOLLAND KOBELCO CONSTRUCTION MACHINERY S.p.A. company may at any time and from time to time, for technical or other necessary reasons, modify any of the details or specifications of the product described in this brochure. Illustrations do not necessarily show products in standard conditions. The dimensions, weights and capacities shown herein, as well as any conversion data used, are approximate only and are subject to variations within normal manufacturing techniques.

Published by NEW HOLLAND KOBELCO CONSTRUCTION MACHINERY S.p.A. - [www.newholland.com](http://www.newholland.com)  
 Printed in Italy - LEADER Firenze - Cod. 73301 091GB - Printed 04/06

 **NEW HOLLAND**