

180 ATJ

Aerial Work Platforms

↓ **Brochures** ▾

✉ **Contact**

Photos () Videos () **Technical data sheet ()**

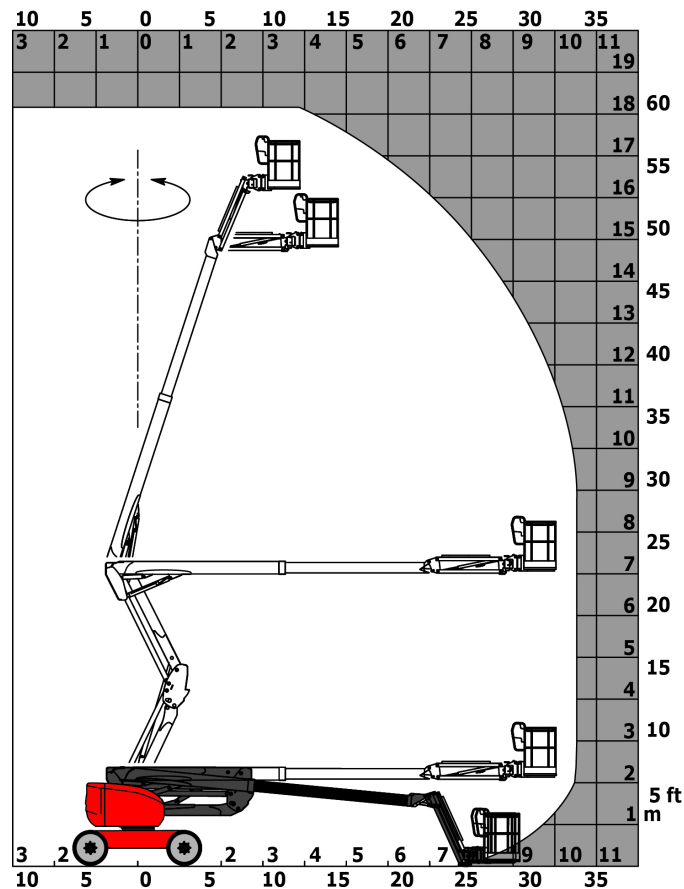
Equipments () Benefits () Services ()

The 180 ATJ articulated platform has a capacity of 230 kg and a working height of 18.19 m. It meets all of your needs if working outdoors on uneven, sloping and obstructed ground. Its all-terrain capabilities make it an ideal working companion on uneven sites.

Equipped with the new incremental hydraulic management for engine speed, it will reduce noise levels as well as your fuel consumption. As with all of the diesel-powered platform range, the 4-wheel drive and 3 steering modes guarantee the machine's ease of movement and positioning on cluttered or confined sites. The design of the console provides the operator with a clear environment for quick handling and immediate productivity.

Performances

Load chart (EN1459-B) :



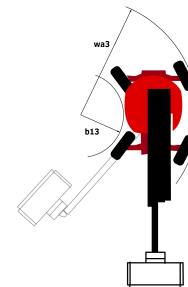
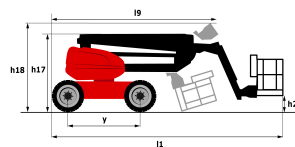
| | | |
|---|---------|----------|
| Lifting height | 16.19 m | 53'1" |
| Lifting capacity | 230 kg | 506 lb |
| Lifting capacity (no. of people) | | 2 |
| Exterior lifting capacity (no. of people) | | 2 |
| Max reach | 10.51 m | 34'6" |
| Overhang | 7.55 m | 24'9" |
| Moving speed | 5 kmh | 3.11 mph |
| Working speed | 1 kmh | 0.62 mph |

Dimensions

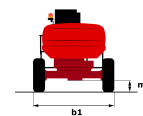
| | | |
|-------------------------|---------|----------|
| Overall length | 7.79 m | 25'7" |
| Overall length (folded) | 5.56 m | 18'3" |
| Width | 2.32 m | 7'7" |
| Height | 2.47 m | 8'1" |
| Overall height (folded) | 2.56 m | 8'5" |
| Weight (unladen) | 7430 kg | 16380 lb |
| Turning radius | 3.75 m | 13'4" |
| Ground clearance | 0.4 m | 1'4" |

Scale drawing (side view) :

Scale drawing (top view) :



Scale drawing (front/rear view) :



Engine / Battery

| | | |
|--------------------------|-----------|---------|
| Energy | Diesel | |
| Engine brand | Kubota | |
| Engine type | Stage 5 | |
| Engine manufacturer type | D1105-E4B | |
| Power | 24.8 ch | 24.8 hp |
| Power | 18.5 kW | |

Hydraulic

| | |
|----------|----------|
| Pressure | 340 bars |
|----------|----------|

| | | |
|---------------------------|------|-----------|
| Hydraulic oil tank volume | 54 l | 14.26 gal |
|---------------------------|------|-----------|

Other specifications

| | |
|--|-----|
| Number of wheels (front/rear) | 2/2 |
| Number of drive wheels (front/rear) | 2/2 |
| Number of steering wheels (front/rear) | 2/2 |
| Number of braking wheels (front/rear) | 0/2 |

Check out our used equipment ads



Find Used Equipment

(<http://used.manitou.com>)

Equipment

- Telehandlers
(/en/s/U89ybCYAACoAdl8Q)
- Rotating Telehandlers
(/en/s/U8901SYAACoAdmRf)
- Masted Forklift Trucks
(/en/s/U8912iYAACYAdmZw)
- Truck Mounted Forklifts
(/en/s/U8957iYAACcAdm6X)
- Warehousing Equipment
(/en/s/U896pCYAACoAdnAR)
- Aerial Work Platforms
(/en/s/U893dyYAACoAdmmd)

Attachments

- Fork Carriages
(/en/s/U_NM2CQAACoA38rz)
- Buckets
(/en/s/U89vhiYAACcAdlkV)
- Clamps
(/en/s/U89wkCYAACoAdls_)
- Forks & Grabs
(/en/s/U898kyYAACUAdnQT)
- Jibs
(/en/s/U898PSYAACoAdnNY)
- Platforms
(/en/s/U898KCYAACUAdnMn)

Services

- Financing
(/en/ss/UrwyoAEAAAC3kpbWC)
- Warranty Extension
(/en/ss/UrwywAEAAEDkpbWG)
- Maintenance Contract
(/en/ss/U85syQAACcAGcyd)
- Connected Solution
(/en/ss/Urw0_AEAAHvkpbWM)
- Spare parts
(/en/ss/VXmTCS0AAJkAbYgs)