

B-SERIES CRAWLER EXCAVATORS
CX130B

CASE
CONSTRUCTION



BUILT
STRONG

www.casece.com
EXPERTS FOR THE REAL WORLD
SINCE 1842

B-SERIES CRAWLER EXCAVATORS

DURABILITY BUILT IN

The upper-structure, redesigned to match increased hydraulic performance, ensures CASE legendary durability and reliability even in toughest conditions. Boom and dipper feature forged brackets and reduced tolerances for increased component life minimizing downtime. Resin side shims on boom and dipper contribute to lower wear and service intervals. New synthetic hydraulic filter reduces system contamination, cutting service costs and boosting machine longevity.

LOW OPERATING COSTS

The certified fuel efficient powerful engine meets Tier III emissions regulations granting reduced fuel consumption.

A large fuel tank, combined with low consumption results in a 2-day work period between refills.

Extended Maintenance System grants longer greasing intervals on all pins compared to competition.

All filters and regular fill points are grouped for easy access. Radiator and cooler cores are mounted side by side for more efficient cooling and easy access for cleaning.

Optional high flow refueling pump with automatic cut off reduces downtime for regular fills.



POWER AND SPEED

The advanced hydraulic system has three working modes offering higher breakout force, improved swing speeds and greater swing torque, resulting in faster cycle times and 5% increase in productivity. Power boost function is automatically engaged. The electronic management of speed and power lowers fuel consumption and offers considerable productivity benefits in terms of outputs.

OPERATOR COMFORT

The widened cab structure offers more leg and foot space, while the extensive glass surface contributes to give an impression of aperture to the operator.

Ergonomic layout, intuitive controls and a seat that lays flat ensures optimum comfort for all operators. Additionally, the viscous fluid cab mountings and top quality insulation lead to a stress and fatigue reduction for the operator, boosting productivity and performance. Four positions consoles with return to pre-set modes will suit operators of all sizes and needs.



SAFETY FIRST

All around visibility in the cab is provided by a wide glazed area with single-piece window on the right hand side for unobstructed view. The frame structure has three times the structural rigidity of previous models, reducing noise and vibration for the operator. An adjustable control console with ergonomic design makes it easier to choose the correct operating mode, increasing comfort and safety.

B-SERIES CRAWLER EXCAVATORS



ENGINE

An electronically-controlled common rail engine that meets Tier III emissions regulations powers the CX130B. The advanced design incorporates a fuel cooler to improve control of the volume and timing of injection, while exhaust gas recirculation contributes to reduce emissions. High torque output at low engine speeds, with a large capacity hydraulically driven fan and low sound exhaust muffler, contribute to lower noise levels inside the cab and outside the machine. Auto and one-touch idle speed settings ensure maximum efficiency in all operating conditions.

All Case B series excavators can be equipped with hot climates cooling system (tropical package) to face temperatures above 45°C.



HYDRAULICS

The CX130B features an efficient hydraulic system incorporating highly efficient variable piston pumps. A variable control pump torque system maintains the correct engine output to match hydraulic demand, ensuring maximum productivity and smooth reaction to operator input.

A synthetic fibre hydraulic filter is provided as standard, protecting valuable components and prolonging hydraulic oil service life up to 5000 hours.



CONTROLS

Mode selection (three working modes available) for the hydraulic system is intuitively set through an advanced engine throttle control, easy reachable from the operator in the fully adjustable right hand console.

- A** A-MODE: for grading, lifting and precision work.
- H** H-MODE: the best balance between productivity and fuel economy.
- SP** SP-MODE: extra speed and power for the most demanding jobs that require maximum productivity.

Auto Power boost automatically increases hydraulic pressure according to the operation's demands. The display console has a luminosity sensor to ensure that it is easy to read whatever the ambient light conditions. Operators can store up to 10 auxiliary hydraulic flow settings in the machine's advanced hydraulic control, making it possible to use up to 10 attachments with no manual adjustment to the machine's hydraulic valves. This reduces downtime for attachment changeover, increasing productivity.

**BUILT
STRONG**

OPERATOR'S CAB

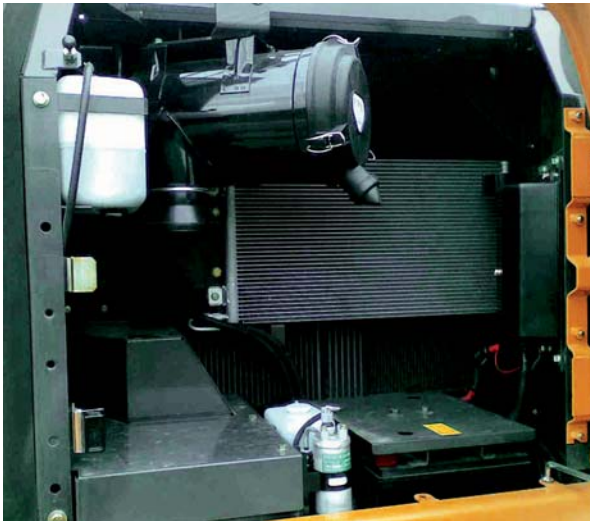
The Case B series with its single-piece window and wide glazed surface provides best in class all around visibility. Despite re-profiled slim pillars, the cab is three times more rigid, for increased operator safety.

Combined with viscous cab mounts and reduced engine noise, this results in best-in-class insulation. All operators can find a comfortable position, thanks to adjustable consoles, fully reclining seat, unmatched leg room and air conditioning with nine outlet vents.

The B series cab features multiple standard options as the large storage box behind the driver's seat, bottle and can holders, a mobile phone holder and a cool box that uses the air conditioning system to regulate internal temperature.



B-SERIES CRAWLER EXCAVATORS



MAINTENANCE

Case CX B SERIES excavators are easy to service thanks to ground level access to all filters and maintenance points. The filters are remote mounted in a centralised position, providing easy access, and the larger fuel tank has both a drain valve and a removable service plate, when easy cleaning becomes essential as in case of fuel contamination.

An engine oil drainer cuts the risk of spillage during servicing, protecting the environment.

In addition to this, the B series excavators scores the lowest time in SAE Maintenance comparative tests, outstanding for reduced downtime and cutting operating costs.



UNDERCARRIAGE

The CX130B is available with a standard length undercarriage, with standard dozer blade, or with a LC longer undercarriage, for maximum stability. Long components life reduces ownership costs, and the heat treated drive sprockets ensure extended reliability.

Optional track guides and robust track links, with durable M-shaped seals and increased pin hardness further boost longevity and reduce track wear.

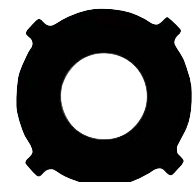
The track rollers have an O-ring design that prevents dirt and dust scaling.

IMPROVED PIN AND BUSHING LIFE

Extended Maintenance Bushings (EMS) are now standard equipment on all Case CX B series excavators. These low maintenance bushings provide longer greasing intervals, greatly reducing daily and weekly maintenance for the operator, and increasing productivity. Anti-friction resin shims in the boom foot and head reduce noise and free play, increasing durability and reliability for the customer.



EMS chrome plated pins with brass bushing



Antifriction shims

**BUILT
STRONG**



B-SERIES

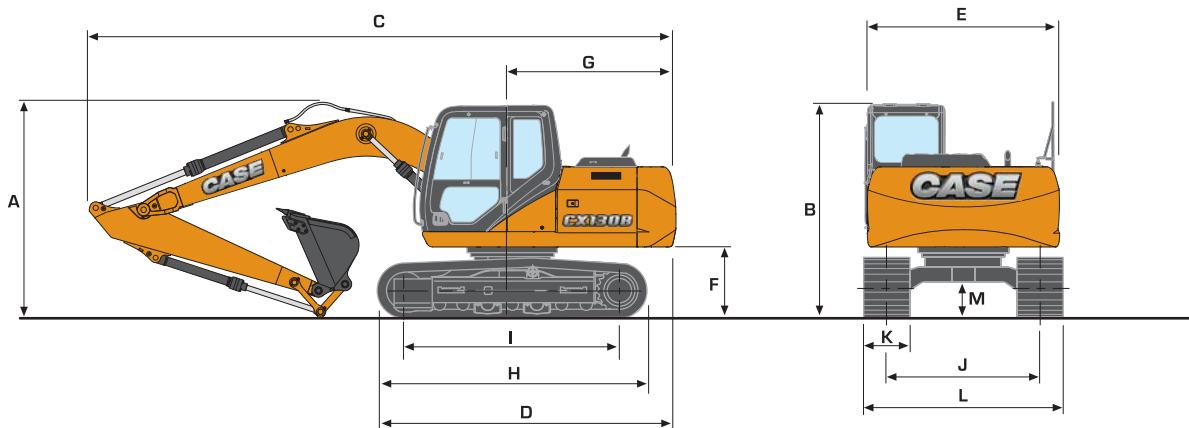
CRAWLER EXCAVATORS

SPECIFICATIONS

CX130B

ENGINE	
Make	ISUZU
Type	AJ-4JJ1X
Emission levels	Tier 3
Common rail, turbo, intercooler, fuel cooler	Yes
Direct injection	Electronically controlled
Number of cylinders	4
Bore - Stroke (mm)	95.4 x 104.9
Cubic capacity (cc)	2999
Max power (kW/hp) EEC80/1269	70.9 /96
(@rpm)	2000
Maximum Torque (Nm)	359
(@rpm)	1600
HYDRAULIC SYSTEM	
Max output (l/min)	2 x 129
(@ rpm)	2000
2 axial piston, variable flow pumps	Yes
Attachment/Power Boost (bar)	343/363
Swing (bar)	294
Travel (bar)	343
Oil filtration	6 micron
Type of oil filter	Synthetic fiber super fine High catch
SWING	
Max upperstructure swing speed (rpm)	14.3
Swing torque (kN-m)	33
TRAVEL	
The travel circuit is equipped with axial piston, variable flow motors	
Max travel speed (km/h)	5.6
Low travel speed (km/h)	3.4
Speed change is controlled from the instrument panel	
Automatic downshifting	Yes
Gradeability	70% (35)
Tractive (daN)	11500
ELECTRICAL SYSTEM	
Circuit (V)	24
Batteries (V - A/h)	2 x 12 - 72
Circuit equipped with water-proof connectors	Yes
Alternator (V - Amp)	24 - 50
UNDERCARRIAGE	
Upper rollers	2 (LC) - 1 (STD)
Lower rollers	7
Number of track pads	46 (LC) - 43 (STD)
Type of shoes	Triple grouser
Track pad width standard (mm)	600
CIRCUIT AND COMPONENT CAPACITIES	
Fuel tank (l)	260
Hydraulic reservoir (l)	82
Hydraulic system (l)	157
Travel reduction gear (per side) (l)	2.1
Swing reduction gear (l)	2.2
Engine (including filter change) (l)	17
Engine cooling system (l)	14.6

SPECIFICATIONS



GENERAL DIMENSIONS

with 4.63 m standard monoboomb

DIPPER LENGTH			CX130B Mono STD*/LC		
			2.10	2.50	3.00
A	Overall height (with attachment)	m	2.82	2.82	2.82
B	Cab height	m	2.79	2.79	2.79
C	Overall lenght (with attachment)	m	7.62	7.64	7.61
D	Overall lenght (without attachment)	m	3.58	3.58	3.58
E	Width of upperstructure	m	2.54	2.54	2.54
F	Upperstructure ground clearance	m	0.89	0.89	0.89
G	Swing radius (rear end)	m	2.13	2.13	2.13
H	Track overall length	m	3.50	3.50	3.50
I	Centre idler to centre sprocket	m	2.79	2.79	2.79
J	Track gauge	m	1.99	1.99	1.99
K	Track shoe width standard	mm	600	600	600
L	Track overall width - 500 mm shoes	m	2.49	2.49	2.49
	- 600 mm shoes	m	2.59	2.59	2.59
	- 700 mm shoes	m	2.69	2.69	2.69
M	Ground clearance	m	0.44	0.44	0.44

* available with blade as well equal dimensions

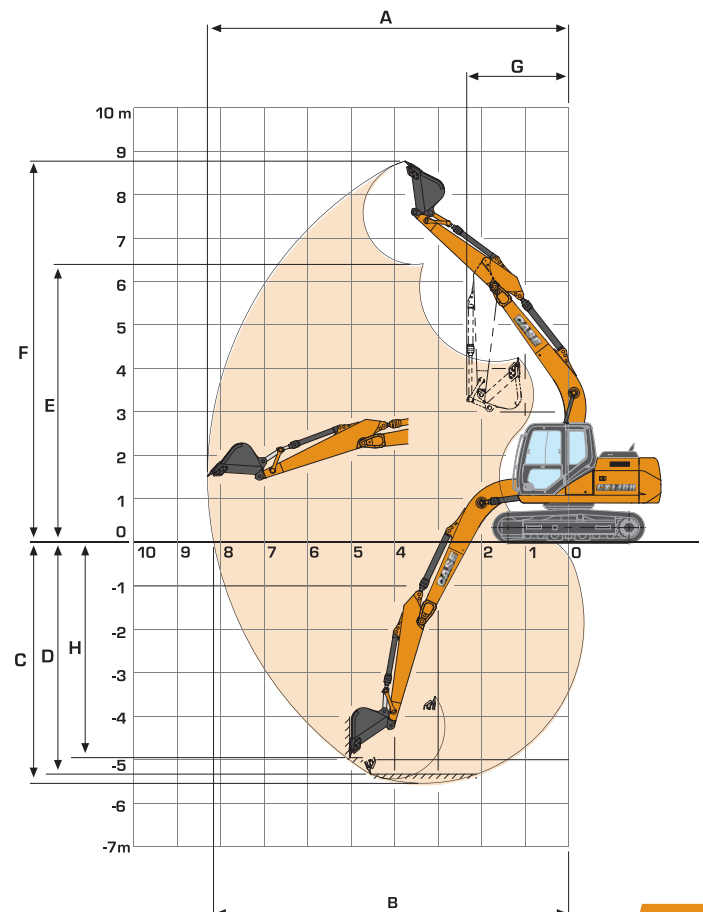
WEIGHT AND GROUND PRESSURE

Weight = kg Ground pressure = bar	Mono STD		Mono LC		Mono w/BLADE	
	W	G.P	W	G.P	W	G.P
shoes 500 mm rubberlink	12600	0.41	12900	0.38	13300	0.43
shoes 500 mm steel	12500	0.40	12800	0.38	13300	0.43
shoes 600 mm steel	12700	0.34	13000	0.32	13500	0.36
shoes 700 mm steel	13000	0.30	13300	0.28	13800	0.32

PERFORMANCE DATA

with 4.63 m standard monoboomb

DIPPER LENGTH			CX130B Mono STD		
			2.50	3.01	2.11
A	Maximum digging reach	m	8.31	8.77	7.96
B	Maximum digging reach at ground level	m	8.17	8.64	7.81
C	Maximum digging depth	m	5.54	3.05	5.15
D	Digging depth - 2,44 m level bottom	m	5.33	5.87	4.91
E	Max dump height	m	6.39	6.68	6.17
F	Overall reach height	m	8.77	9.05	8.55
G	Minimum swing radius - attachment	m	2.34	2.66	2.36
H	Vertical straight wall dig depth	m	4.95	5.35	4.06
Digging force - w/o Power Boost		daN	6200	5600	7000
- with Power Boost		daN	6600	6000	7400
Breakout force - w/o Power Boost		daN	9000	9000	9000
- with Power Boost		daN	9500	9500	9500



B-SERIES

CRAWLER EXCAVATORS

with 4.63 m standard boom

	REACH											
	1.5 m	3.0 m	4.5 m	6.0 m	7.5 m	At max reach						
Front												
Side												

LC UNDERCARRIAGE - 2.50 m dipper, 600 mm shoes and bucket of 0.50 m³ (399 kg)

	6.0 m	4.5 m	3.0 m	1.5 m	0 m	-1.5 m	-3.0 m	-4.5 m	2154*	2154*	5.38
									1489*	1489*	6.58
			4905*	4905*	3738*	3161	3118	1945	1518*	1428	7.09
			7680*	5403	4792	2884	2987	1826	1647*	1317	7.24
			8401*	4998	4554	2678	2877	1726	1916*	1324c	7.08
			9063*	4917	4451	2589	2827	1680	2457*	1471	6.57
			8108*	5000	4479	2613			3172	1894	5.61
			5698*	5265					4259*	3469	3.89

LC UNDERCARRIAGE - 2.11 m dipper, 600 mm shoes and bucket of 0.55 m³ (409 kg)

6.0 m					3054*	3054*					2932*	2932*	4.76
4.5 m					3281*	3281*	2511*	2005			1828*	1828*	6.20
3.0 m			5688*	5688*	4090*	3114	3099	1930			1870*	1568	6.73
1.5 m			8313*	5273	4753	2855	2982	1824			2043*	1445	6.89
0 m			7904*	4987	4549	2678	2889	1740			2405*	1461	6.72
-1.5 m			8904*	4969	4481	2619	2863	1716			2743	1647	6.18
-3.0 m			7672**	5091	4546	2676					3681	2205	5.15

LC UNDERCARRIAGE - 3.01 m dipper, 600 mm shoes and bucket of 0.37 m³ (339 kg)

	6.0 m	4.5 m	3.0 m	1.5 m	0 m	-1.5 m	-3.0 m	-4.5 m	1912*	1912*	6.14
									2619*	2096	7.09
									2983*	1993	7.56
									1610*	1310	7.70
			6792*	5611	4405*	2954	3024	1859	2082	1255	7.55
			8699*	5059	4590	2709	2892	1739	1968*	1204	7.08
			9146*	4884	4442	2581	2815	1669			6.20
			8560*	4911	4427	2567	2824	1677			4.71
			6761*	5105	4343*	2689			4045*	2518	

BLADE - 2.50 m dipper, 600 mm shoes and bucket of 0.50 m³ (399 kg)

	6.0 m	4.5 m	3.0 m	1.5 m	0 m	-1.5 m	-3.0 m	-4.5 m	2154*	2154*	5.38
									1489*	1489*	6.58
			4905*	4905*	3738*	3272	2736	2022	1518*	1491	7.09
			7680*	5601	4157	2996	2609	1903	1647*	1379	7.24
			7886	5195	3929	2789	2502	1803	1916*	1388	7.08
	5243*	5243*	7789	5115	3830	2700	2453	1758	2146	1540	6.57
	8223*	8223*	7888	5197	3857	2724			2754	1978	5.61
			5698*	5462					4259*	3604	3.89

BLADE - 2.11 m dipper, 600 mm shoes and bucket of 0.55 m³ (409 kg)

6.0 m					3054*	3054*					2932*	2932*	4.76
4.5 m					3281*	3281*	2511*	2083			1828*	1828*	6.20
3.0 m			5688*	5688*	4090*	3225	2719	2008			1870*	1636	6.73
1.5 m			8210	5470	4121	2967	2604	1901			2043*	1510	6.89
0 m			7866	5184	3926	2789	2514	1817			2114	1528	6.72
-1.5 m	5806*	5806*	7845	5167	3860	2730	2490	1794			2387	1722	6.18
-3.0 m	9455*	9455*	7672*	5289	3923	2787					3195	2299	5.15

BLADE - 3.01 m dipper, 600 mm shoes and bucket of 0.37 m³ (339 kg)

	6.0 m	4.5 m	3.0 m	1.5 m	0 m	-1.5 m	-3.0 m	-4.5 m	1912*	1912*	6.14
									2619*	2174	7.09
									2788	2070	7.56
									1610*	1369	7.70
			6792*	5808	4235	3065	2645	1936	1816	1314	7.55
	2633*	2333*	7960	5256	3963	2820	2516	1816	1762	1264	7.08
	4676*	4676*	7751	5082	3822	2692	2442	1747			6.20
	7174*	7174*	7783	5109	3807	2678	2450	1754			4.71
	10701*	10701*	6761*	5303	3942	2800					
									3674	2623	

* The above loads (kg) are compliant to the ISO standards and refer to the excavator equipped with bucket. The indicated loads are no more than 87% of hydraulic system lift capacity or 75% of static tipping load. Values marked with an asterisk (*) are limited by the hydraulic lifting capacity rather than the tipping load.



BUCKETS

GENERAL PURPOSE

SAE capacity	l	190	260	330	450	560	640	720	800
Width	mm	350	450	600	750	900	1000	1100	1200
Weight	kg	270	300	330	370	410	440	470	490

HEAVY DUTY

Ditch cleaning

SAE capacity	l	640	720	300	620	760
Width	mm	1000	1100	2200	1520	1800
Weight	kg	450	485	430	469	492

* For other bucket sizes, please contact your CASE dealer

www.casece.com
EXPERTS FOR THE REAL WORLD
SINCE 1842

CASE
CONSTRUCTION



Form No. AME5303CCGB - MediaCross Firenze - 03/18

**CASE CONSTRUCTION EQUIPMENT
CONTACT INFORMATION**

CNH INDUSTRIAL - TORINO
Via Plava 80
10135 Torino
Italy

CNH INTERNATIONAL S.A. - LUGANO
Riva Paradiso 14
6902 Paradiso - Lugano
Switzerland

CNH INDUSTRIAL - MIDDLE EAST
Dubai Regional Representative Office
Dubai Airport Free Zone, Building 2W
Office 201 - PO Box 54588
Dubai, United Arab Emirates

CNH INDUSTRIAL - SOUTH AFRICA
N1 Business Park
Slate Avenue
Cosmosdal
South Africa

NOTE: Standard and optional fittings can vary according to the demands and specific regulations of each country. The illustrations may include optional rather than standard fittings - consult your Case dealer. Furthermore, CNH Industrial reserves the right to modify machine specifications without incurring any obligation relating to such changes.

Conforms to directive 2006/42/EC

